

ASSOCIATION OF PROFESSIONAL LANDSCAPE DESIGNERS

thedesigner

2023 Awards Issue

DESIGNER OF THE YEAR

Kathryn Prideaux, CPLD, FAPLD,
Prideaux Design
Perfect Skew, Tucson, AZ

2023 APLD International Landscape
Design Awards

table of contents

2023 APLD INTERNATIONAL LANDSCAPE DESIGN AWARDS

The Judges	3
Designer Of The Year	6
Best of Show	12
Residential Under \$25,000	19
Residential \$25,000 - \$100,000	21
Residential Over \$100,000	41
Planting Design	77
Non-Residential Over \$500,000	81
Details	84
Show Gardens	87
Small Gardens	93
Specialty Projects	108
Board of Directors	111

The 2023 International Landscape Design Award winners presented design ideas exceeding fundamental conceptual boundaries while encompassing space, serenity, and sustainability. All the designs are works of aspiration and excellence. Enjoy these highlights of the winning projects.

the judges

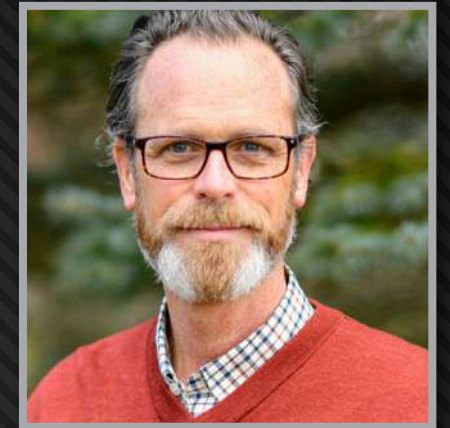
2023 APLD International Landscape Design Awards Distinguished Judges



Bruce Crawford



Margie Grace



Charles Hess



Carolle Huber



Ellen Johnston, CPLD, FAPLD



Tina Nyce, CPLD, FAPLD



Greg Pierceall



Kathy Stokes-Shafer



Susie Thompson, CPLD, FAPLD

Thank you to all of our sponsors for your support!
We couldn't do it without you!

APLD Silver Sponsors



Hunter
 FXLuminaire

APLD Bronze Sponsors



COUNTRY CASUAL TEAK.

*Our sponsors spend their advertising dollars to reach YOU.
 Please support our sponsors and consider recommending them to clients.*



PURPLE PILLAR®
Hibiscus syriacus 'Gandini Santiago' PP#25,568; CBR#6178

Narrow | Heat Tolerant | Durable

	 SUMMER BLOOMS	USDA 5-9
	10-16' tall + 4-5' wide	

Purple Pillar® hibiscus brings the durable easy growth of rose of Sharon to skinny spaces. Large, semi-doubled flowers adorn a fastigate habit, creating unlimited landscape potential: narrow hedges, screens, formal gardens, entryways, and even decorative containers.



SCAN TO LEARN MORE

Available from Proven Winners® ColorChoice® growers www.provenwinners-shrubs.com

2023 apld international landscape
designer of the year



designer of the year

PERFECT SKEW

Residential Category Over \$100,000

Project Location: Tucson, AZ

Zone: 9a

Designer of the Year, Kathryn Prideaux, CPLD, FAPLD, Prideaux Design

Website: www.prideaux-design.com

Firm Location: Tucson, AZ

PHOTOGRAPHS BY FLETCHER AND CO.



Sometimes a perceived negative can become an inspiring positive, like Kathryn Prideaux's artful take on the existing elements that influenced her design.

In the beautiful southwest desert of Arizona, tucked in the cul-de-sac of a neighborhood, APLD's 2023 Landscape Designer of the Year Kathryn Prideaux embraced skewed lines to create a stunning outdoor masterpiece, titled "Perfect Skew."

Following a remodel of the interior areas of their home, Prideaux's clients sought to align their outdoor spaces with the new contemporary aesthetic inside. The clean lines and modern feel of the interior clashed with the outdated earth and teal tones of the backyard's southwestern motif. They called Prideaux Design for the job.

After their meeting, Prideaux said she sought to craft, "A space that had a fresh, contemporary look, while taking full advantage of the desert surroundings... All decisions were made to maximize drama while keeping within a budget."

As birdwatchers and wildlife aficionados, the clients desired a close connection to the desert and mountains. Maintaining a view of the mountains from their fire pit and their mature, sprawling mesquite tree were also important. The scope of the project entailed updating the pool, spa and fire pit, preserving existing patio levels around the pool while extending them to accommodate furniture, developing a water feature, crafting a functional place for al fresco grilling and dining, and creating privacy and separation from a looming nearby home.

Judges said Prideaux's design masterfully fulfilled her clients' program.

"I absolutely love this project with its perfect title," a judge wrote. "The plans show so wonderfully and artfully how the angles have been done. The fire feature is imaginative yet simple."

"Stellar simplicity," another judge stated. "The flat water, forms, and level changes are great [providing] subtle color changes where there is a level change."

Taming the Skew

As Prideaux began the project, she realized the existing pool walls were not parallel with the house.

"A pool renovation is a lot. It makes a big difference for the money the more walls you can keep," Prideaux said. "The idea was to keep the main long wall of the pool and a perpendicular wall, but... [it was] not parallel. It was a really frustrating constraint and then I turned it into something that was kind of a feature."

Prideaux continued, "So, the idea is that everything I'm seeing then uses two lines. Instead of everything just being parallel to the house, I used [the skewed line] and the line that's parallel to the house to create the design... It's kind of this combination. Everything is a little bit skewed, [which] actually created this really dynamic space and made it really interesting instead of more predictable."

Prideaux made the fireplace parallel with the pool lines and cut the pavers parallel to the house. She also designed the expanded pool deck parallel to the house and askew from the pool to continue adding elements of anticipation and energy.



designer of the year

Transforming the Pool

Prideaux kept the original size of the pool and two walls, but changed everything else. To bring the home's contemporary feel outdoors, Prideaux selected a light, neutral palette with black accents. The turquoise color of the pool felt jarring with the rest of the design, inspiring Prideaux to give the pool a more modern Black Onyx Pebble Sheen finish.

"I love a black [pool] because it looks so elegant and amazing," Prideaux shared. "What's really great about a black-colored interior pool is that you get a really reflective surface on the water, so it really is like a mirror reflecting the sky and that amazing mesquite tree."

The spa transformed into a raised, full overflow spa inside the larger pool to create the feel of a natural hot spring.

The dark pool and floating concrete pad are two of Prideaux's favorite parts of the design.

"I love the concrete deck... and how it looks like it's hovering over the water and has that kind of cantilevered look," she said.



The Feature Wall – A Beautiful Visual Barrier

The inspiration for the feature wall came from the placement of the neighbor's house and their overreaching view of the pool.

Prideaux created an impressive 7-foot-tall and 13-foot-wide water feature wall to serve as the focal point of the yard.

The clean geometric lines that Prideaux Design is known for contrast strikingly with the wild arroyo seen through the open fencing, while also visually separating the patio from the other house. A trellis with plantings behind the wall will fill in over time, further separating the spaces and providing even greater privacy.

Prideaux chose plantings and material selections to soften her desert modern hardscape and add to the aesthetic appeal.

Connecting With Nature

A desert wash runs down along the back fence of the property. The untamed natural beauty of the arroyo draws wildlife and human admiration. Leaning into her clients' love for nature, Prideaux opened up the side of the property and created a small deck so they could easily observe the scene.

Prideaux enhanced the functionality and extended the usability of the space by adding an outdoor kitchen and dining area, as well as a gas fireplace with comfortable seating.

Sustainability and environmental awareness were a strong consideration throughout the design. Steel was chosen and used in many aspects of the design because of its strength and ability to best weather the desert climate.

"I think the most important thing is to try to do a project that will last, with materials that will last, and a good, solid design," said Prideaux. She believes a good, lasting design prevents waste by appealing to the taste of future homeowners. With a good design, they will not feel compelled to renovate everything, thus wasting materials and resources.

Prideaux also chose all native or near native plants to reduce water requirements.

"We are lucky on a lot of projects that we do in that we can direct water to areas that can use it," she said.



Advice for New or Emerging Designers

"If you want to change the look of a pool, there are ways to do it without rebuilding the whole pool. [Try to keep] as much of the existing linear square feet of the pool walls. That is something I've learned from my pool builder over the years," Prideaux shared.

"Try to keep your mind open to things that seem like a constraint at the beginning," Prideaux advised. "You may be able to use those things to your advantage. Plus, it's kind of fun to have constraints. To have things that you have to figure out and work with. It forces a different design than you would have ever come up with."

For those trying to make a niche for themselves in the industry, Prideaux encouraged patience and concentration on their ultimate goals.

"Really focus on projects that you want to keep doing," said Prideaux. "In the beginning it's hard because you kind of have to take every project that you get. So, you just have to challenge yourself to make something about that project special or unique to you. And then, as time goes by, really try to only take projects that you want to do, because that is how you're going to build your portfolio."

Winning Landscape Designer of the Year

Prideaux is thrilled to be selected as APLD's Landscape Designer of the Year. As one of the early members of APLD's Arizona chapter, she has applauded many other award winners over the past 15-plus years.

"I've always kind of been like, 'I want that,' so it's exciting that it happened and a wonderful coincidence that it happened on a year when the conference will be here," she said. "I'm happy to receive [the award] and that it's in Tucson... I don't think we have ever had the winning garden available to see at the conference on tour, so it's really fun."

Prideaux thanks Azure Galleries, the pool builder and hardscaper, for their collaboration with her on this project.





2023 apld international landscape design
best of show

best of show

FORM TO TABLE

Residential Design Project Over \$100,000
Project Location: Carlisle, MA
Zone: 6b

Best of Show Jim Douthit, a Blade of Grass

Website: www.abladeofgrass.com
Firm Location: Sudbury, MA



PHOTOGRAPH BY PETE CADIEUX

From developing a fruit orchard, vegetable gardens, areas for animals, and perennial gardens to reconstructing the pool, restoring wetlands, and creating outdoor dining, a fire pit, and a greenhouse, the scale and complexity of the project was significant.

Judges were impressed with the outcome. They awarded Douthit's Form to Table design with APLD's Best of Show award in recognition of the quality and beauty of the design and implementation, the fulfillment of the clients' needs, and the respect of the property's history through land use, materials and construction.



PHOTOGRAPH BY JIM DOUTHIT

By creatively fulfilling their clients' desires through large, beautiful and connected agrarian spaces featuring vegetable gardens and orchards, a Blade of Grass brought the Form to Table in this project.

Jim Douthit, owner and lead designer of a Blade of Grass, and his team performed an amazing transformation on a New England property, earning APLD's 2023 Best of Show award.

Douthit's clients found their forever home in a 1773 historic farmhouse on a large property in northeastern Massachusetts. Renovations on the old farmhouse and barn cherished the historic nature of the property, while also incorporating modern comforts.

Douthit's team was brought on to increase functionality of the property for the clients by strengthening their connection to the outdoors and "...developing a landscape that respected the history of the site while making a conscious effort to revive the agrarian roots of the pastoral setting."

Douthit and his team took a relatively bare, unstructured landscape and turned it into a beautiful, functional series of large, connected spaces.

The Challenges

Nestled among the woods and rolling fields of northeastern Massachusetts, the rustic, elegant 1773 farmhouse and barn sat on a treeless, muddy plot of land marred by construction vehicles. Major grade changes from the house, visible road traffic, and overgrown wetlands presented extra challenges.

"By the time we started, there was nothing left. It was just the house and a giant bare space," said Douthit. "I really, really wanted it to feel lush and full, so [my clients] wanted to be out there and comfortable in those spaces. We had to plant [trees, shrubs, and flowers] to bring the scale down."

Growing up in the verdant foliage of Hawaii, Douthit used the blank canvas to incorporate his love of leafy and plentiful design. Paired with reclaimed antique stone along with other elements, the team carefully crafted an abundant old farm country feel into each outdoor room and space.

"Every view out of every window, every access out of every door led into a different [outdoor] room with a different use," Douthit said. "We were able to create a series of really great rooms with different purposes that our clients actually use... like a vegetable garden close to the kitchen or a patio with a grill and cool transition area or framing the extended views from certain spots."

Douthit's team raised grades to create different levels and shorten staircases, making the spaces feel more accessible and usable.

"There are some pretty major grade changes from the house out and down and we really did not want to have a lot of steps from any outdoor spaces," Douthit said. "We ended up building walls with steps and planting so that it didn't feel [so far]... People just don't go down those extra steps. So, we made them super wide with a landing and deep treads."

Douthit's plans initially included a greenhouse, but his clients were concerned they would not use the space in the cold of winter. Then, a team member proposed a tunnel from the house to the greenhouse—and it actually happened! The complexity was extreme, Douthit shared, but thanks to a good building partner, it all worked out. Adams + Beasley Associates handled building the tunnel and greenhouse and Douthit's team managed the drainage and landscaping.



PHOTOGRAPH BY PETE CADIEUX

best of show



PHOTOGRAPH BY PETE CADIEUX

Sustainability and Honoring the Land

Respecting the land and being environmentally aware were high priorities for a Blade of Grass' team and their client during and after the project. They remediated the wetlands on the property by removing invasive species, leaving snags, and introducing native species. This allowed the land to remain relatively untamed and showcase its natural beauty. The team also integrated drought-tolerant plantings, utilized water-efficient drip irrigation for all planting beds, and used a largely native planting palette.

In a picturesque and historically-fitting design move, a Blade of Grass reused existing hardscape materials from the excavation, demolition, and renovation of the farmhouse, barn, and landscape for fencing, patios, and more. These antique stone materials were key to developing the historic, private, and comfortable spaces Douthit pictured.

Favorite Parts of the Design

"There's a patio off the barn that is antique granite with big wide steps and really cool plantings around it... that goes down to the back orchard seeding garden. I really love that whole space and the views," Douthit said. "I do also really like the area back where the chicken coop is with the vegetable gardens. The stone walls [in that area] are beautiful because they really do look like they are dry laid, but they're not... The combination of the plants and the pea stone and the chicken coops, and outbuildings and the perennials—all that I really love."

The judges found the property's transformation "amazing. [There are] beautiful connections with the ramped lawn, grass steps, stone stairs and walls. Interesting and diverse... what beautiful edible areas. The fire feature is outstanding and the furnishing blends well."

"A grand site design and implementation," another stated. "Materials and construction are perfect. Well done."

"The design sits well on the land, fulfills the client's needs and honors the site's historical roots," said another judge. "Beautiful work."



PHOTOGRAPH BY PETE CADIEUX

Tips of the Trade

Douthit began landscaping during college one summer in Boston. He was hired to do high-end gardening and fell in love with the industry. He dropped out of school and began his business. Now his company employs more than 100 people.

Douthit advised new and emerging landscape professionals to network with groups of designers and industry pros—something he wishes he would have done. Managing a business presents unique challenges and growing pains for landscape professionals. Mentors can help reduce the business management learning curve and point out potential issues, Douthit shared.

Douthit also encouraged education through workshops and garden tours to become comfortable seeing a space and creating a vision for it.

Learning to communicate with clients, to hear their desires, and then guide them so they see the design vision is really important, Douthit advised.

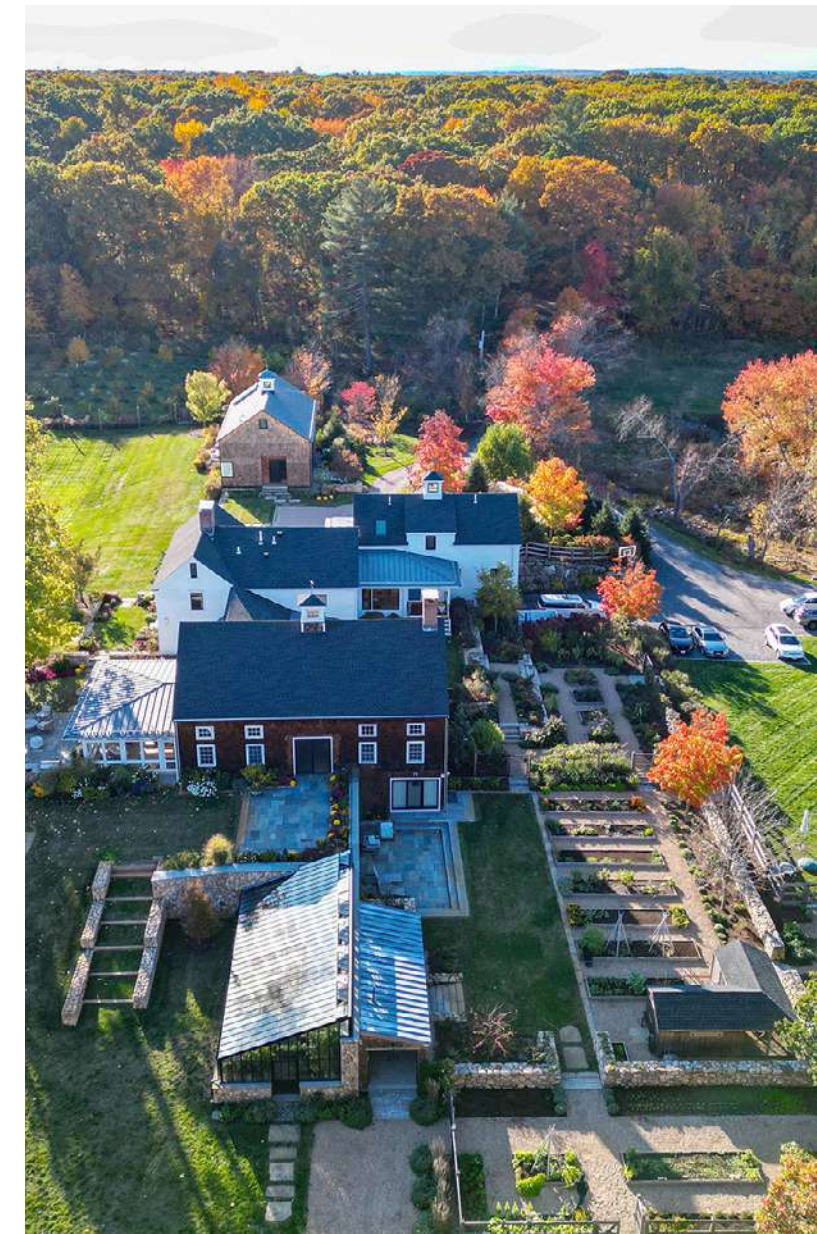
"They're bringing you in for a fresh set of eyes. So, think outside of the box. Try not to get too locked in to what you see, and especially where it starts getting into navigating the budget," said Douthit. "A lot of clients that hire us are willing to pay more, but they just don't know what they want. So, if you show them what they could have and the associated costs, a lot of times they'll go for it. It's easy to look at a space and hear they just want a patio, then not get creative with it. Be willing to get creative and... come up with cool ideas that don't necessarily have to cost more than other options."

With Thanks

Douthit thanked his entire team for helping with "Form to Table" and with his business as a whole. "There is no one or two people that I could do without," said Douthit. "I'm really, really appreciative of my team."

He also thanked Adams + Beasley Associates for their excellent work. They were collaborative and a great partner to work with on a project of this size.

Douthit expressed gratitude to his clients for allowing him and his team to create and showcase this award-winning project.



PHOTOGRAPH BY PETE CADIEUX

FASTER WORKFLOWS FROM START TO FINISH

Accomplish even more with the latest in Vectorworks Landmark 2024, the industry-leading solution for integrated 2D/3D landscape design. You'll see new site analysis features, an automated Fence tool, and landscape color palette so you can take your creativity further with Landmark 2024.

Watch the demo: [VECTORWORKS.NET/LANDMARK24](https://vectorworks.net/landmark24)



GENE LEAHY MALL AT THE RIVERFRONT
COURTESY OF OJB LANDSCAPE ARCHITECTURE AND DAN SCHWALM

Our vibrant community
of landscape design
professionals and
enthusiasts are at the
heart of everything we do!



Join Us at apl.org

2023 award winner
Residential
Under \$25,000



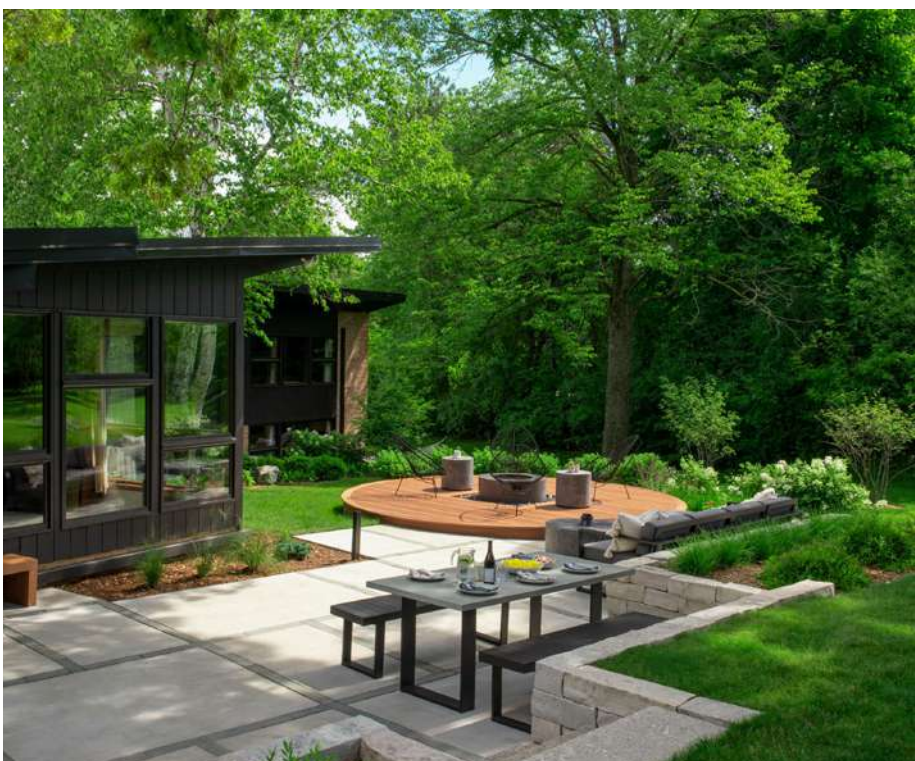
silver award

LEENHOUTS MID-CENTURY
Residential Category Under \$25,000
Project Location: Fox Point, WI
Zone: 5b

**James Drzewiecki,
CPLD & Hannah
Paulson, Ginkgo
Leaf Studio**

Website: www.ginkgoleafstudio.net
Firm Location: Cedarburg, WI

PHOTOGRAPHS BY RENN KUHNEN PHOTOGRAPHY



JUDGES' FEEDBACK:

I love the angled patios with the bluestone in between. The simplified plantings give the design a modern flare that goes well with the house. The back patio spaces are beautiful and so inviting.

2023 award winners

Residential

\$25,000 – \$100,000



gold award

BECKY'S GARDEN

Residential Category \$25,000 – \$100,000

Project Location: Kennett Square, PA

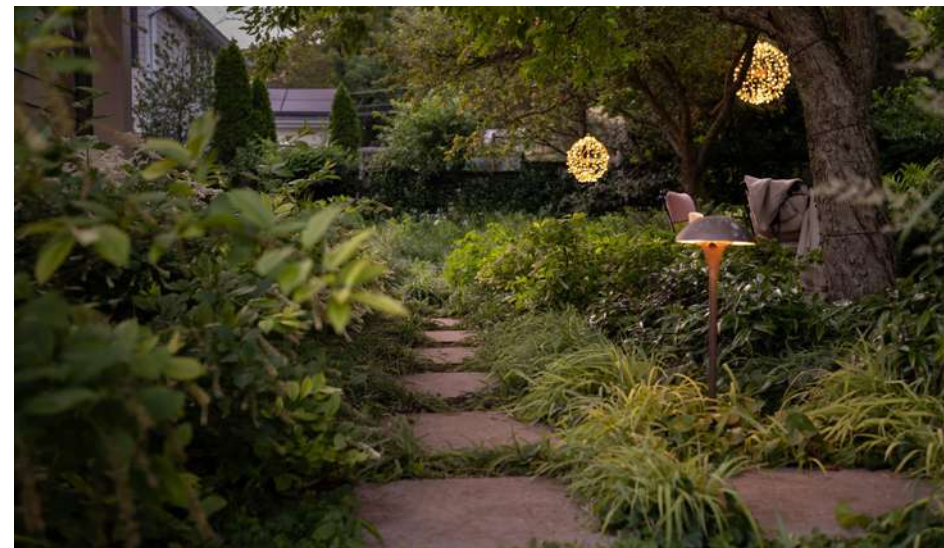
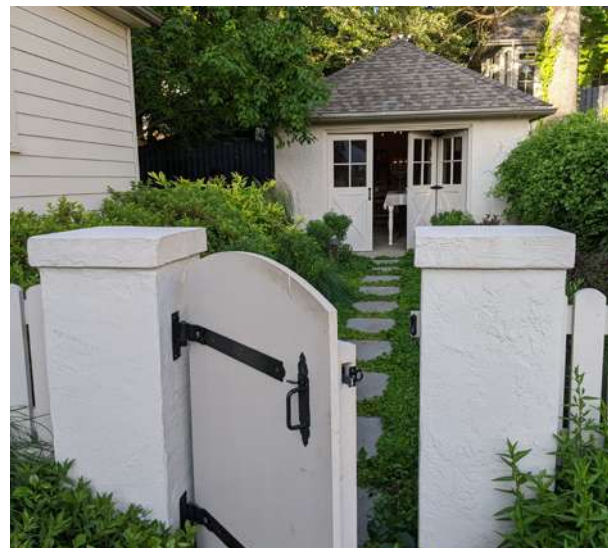
Zone: 7a (borderline 6b)

Danilo Maffei, CPLD, PCH, FAPLD, Maffei Landscape Design LLC

Website: www.danilomaffei.com

Firm Location: Kennett Square, PA

PHOTOGRAPHS BY DOES MEDIA



JUDGES' FEEDBACK:

What a beautiful transformation! This design is so lush and I love getting rid of the lawn! The hardscape was executed beautifully. The view from inside the house is great and appreciated. This aspect is not always taken into consideration.



gold award

MODERN MEETS WHIMSY - FRONT YARD CURB APPEAL

Residential Category \$25,000 – \$100,000

Project Location: San Mateo, CA

Zone: 10a

Rootsy Garden Design

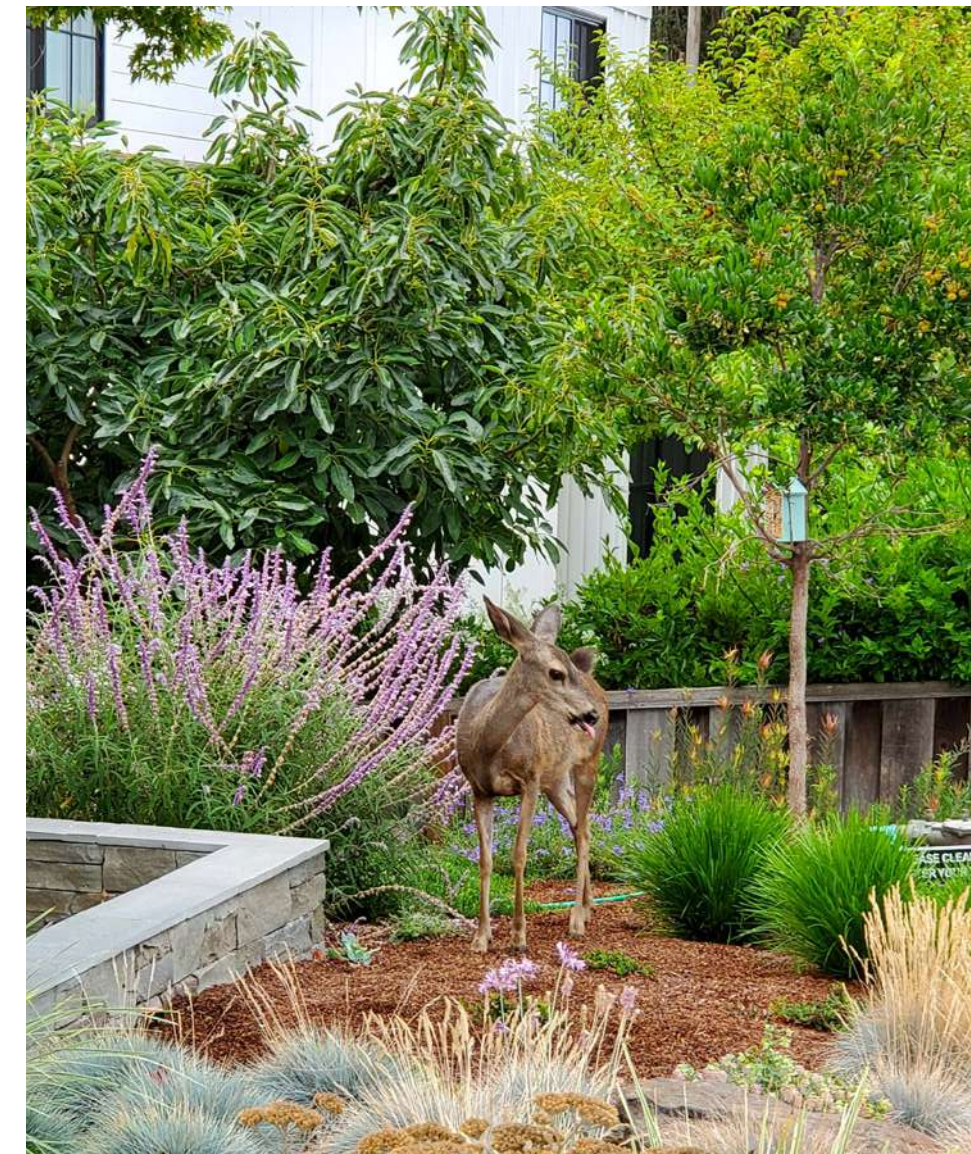
Website: www.rootсыgardendesign.com

Firm Location: Half Moon Bay, CA

PHOTOGRAPHS BY ROOTSY GARDEN DESIGN

JUDGES' FEEDBACK:

Everything about this space is transformed and elevated. The two maple trees along with the blue house make a beautiful backdrop for the orange and yellow elements and the plant materials echo this color palette as well. Bluestone elements further enhance the connection between house and garden. Spaces are right-sized and balanced with focal points nicely distributed. This seamless space achieves a welcoming entry, curb appeal, a functional seating/relaxing area, and a beautiful garden that is respectful of the environment.





gold award

RENO ROAD

Residential Category \$25,000 – \$100,000

Project Location: Washington, D.C.

Zone: 7a

Groundsmith Collective

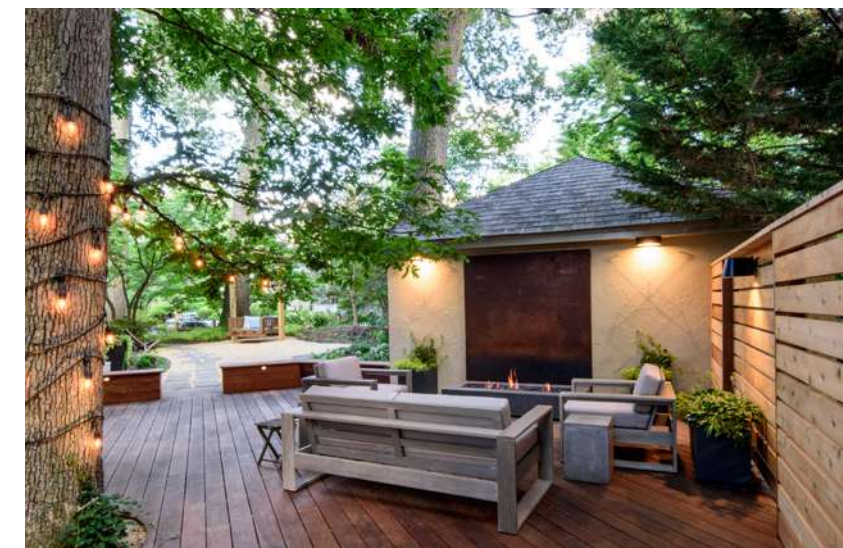
Website: www.groundsmithcollective.com

Firm Location: Hyattsville, MD

PHOTOGRAPHS BY MATT ROTH

JUDGES' FEEDBACK:

A very good division of space with the seating walls. The different hardscape materials further define spaces. Spaces are right-sized and balanced. The impressive oak trees are accommodated by the design, and everything has a strong sense of belonging.



gold award

ROOFTOP RETREAT

Residential Category \$25,000 – \$100,000

Project Location: Tucson, AZ

Zone: 9b

Landscape Design West, Shelly Ann Abbott, MLA

Website: www.landscapestwest.com

Firm Location: Tucson, AZ

PHOTOGRAPHS BY ROBIN STANCLIFF PHOTOGRAPHY



JUDGES' FEEDBACK:

This is a thoughtful and well-designed space reflecting spatial awareness and balance. The planter boxes for walls are exceptionally well-detailed and provide good division of space. The rusted metal works nicely with the brick. The elements are well executed and scaled. This is an exquisite design that transforms and elevates the space and surroundings.



gold award

WAITING FOR SIDDARTHA
Residential Category \$25,000 – \$100,000
Project Location: Cincinnati, OH
Zone: 6

Michael McCleese, A GUY & HIS DOG GARDEN DESIGN LLC

Website: www.aguyandhisdog.net
Firm Location: Newport Center, VT



JUDGES' FEEDBACK:
This design makes exceptional use of vertical space. Plantings and hardscape elements are scattered, but balanced, throughout all layers bringing harmony and a strong sense of being in a good space.

silver award

ADDIS RESIDENCE

Residential Category \$25,000 – \$100,000

Project Location: Tucson, AZ

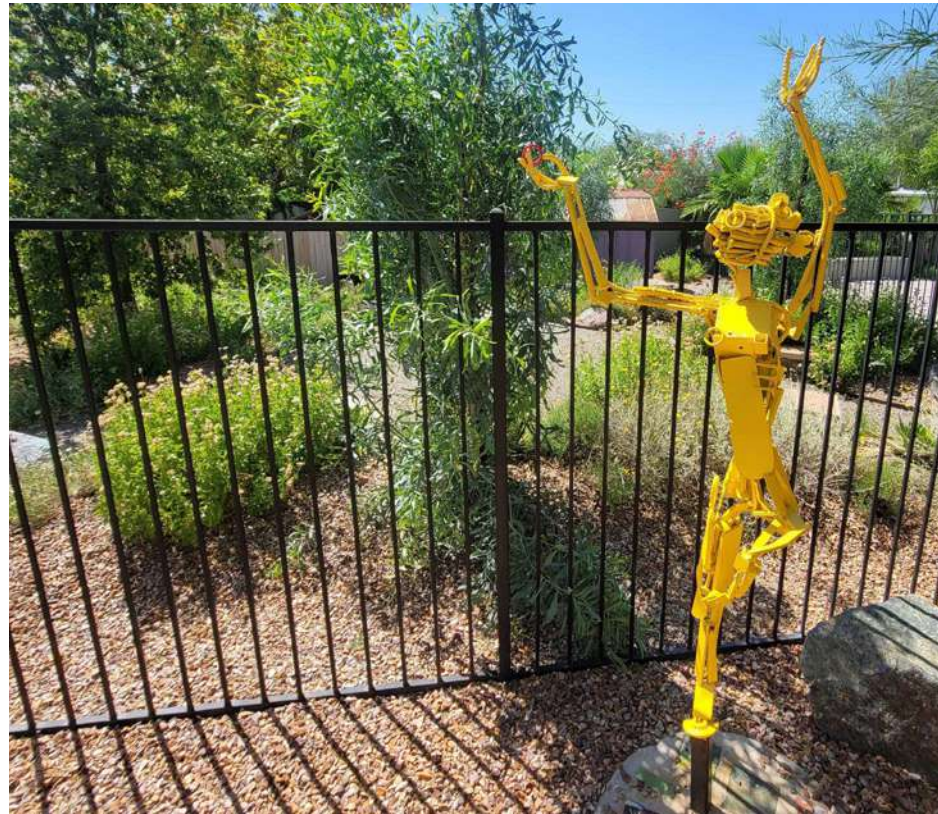
Zone: 9b

Josh Gormally/ ALA, Artistic Landscape Architecture, LLC

Website: www.arlaar.com

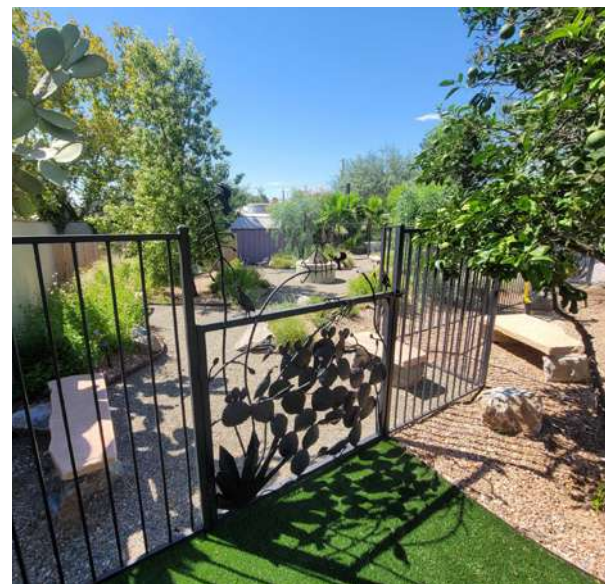
Firm Location: Tucson, AZ

PHOTOGRAPHS BY JOSH GORMALLY



JUDGES' FEEDBACK:

The use of all the steel in a dark color really helps pull this all together. Adding three canopies was a brave move. Wow, that choice makes an impact! I love the use of recycled/repurposed materials, and the fun gate invites you out, rather than saying "stay out."



silver award

CAPITOL HILL COURTYARD RETREAT

Residential Category \$25,000 – \$100,000

Project Location: Washington, D.C.

Zone: 7a/7b

Studio AKA

Website: www.studio-aka.com

Firm Location: Washington, D.C.

PHOTOGRAPHS BY ALLEN RUSS FOR STUDIO AKA LLC



JUDGES' FEEDBACK:

The undulating patio edges make for a pleasant journey through an otherwise straight space. The change in hardscape materials provides excellent spatial definition. Effective plant layering makes this a cozy space.

This is a beautiful transformation. Changing the color of the bay window was smart. The color is perfect. The courtyard is calm and lush.



silver award



LOS ALAMOS RETREAT
Residential Category \$25,000 – \$100,000
Project Location: New Mexico
Zone: 6b

Mark G. Brotton, Principal Designer - Living Water Irrigation & Landscape, LLC

Website: www.livingwaterSF.com
Firm Location: Santa Fe, NM

PHOTOGRAPHS BY MARK G. BROTTON



JUDGES' FEEDBACK:

This design incorporates very good solutions and execution of elements for a very difficult site. Well-placed boulders and reconfigured river rock nicely connect the various spaces. The planting design is nicely layered and the grasses make a welcoming entry and a soft contrast to the surrounding hardscapes. Repetition of the hardscape boulders, path rocks and colors nicely harmonize and unify the space.

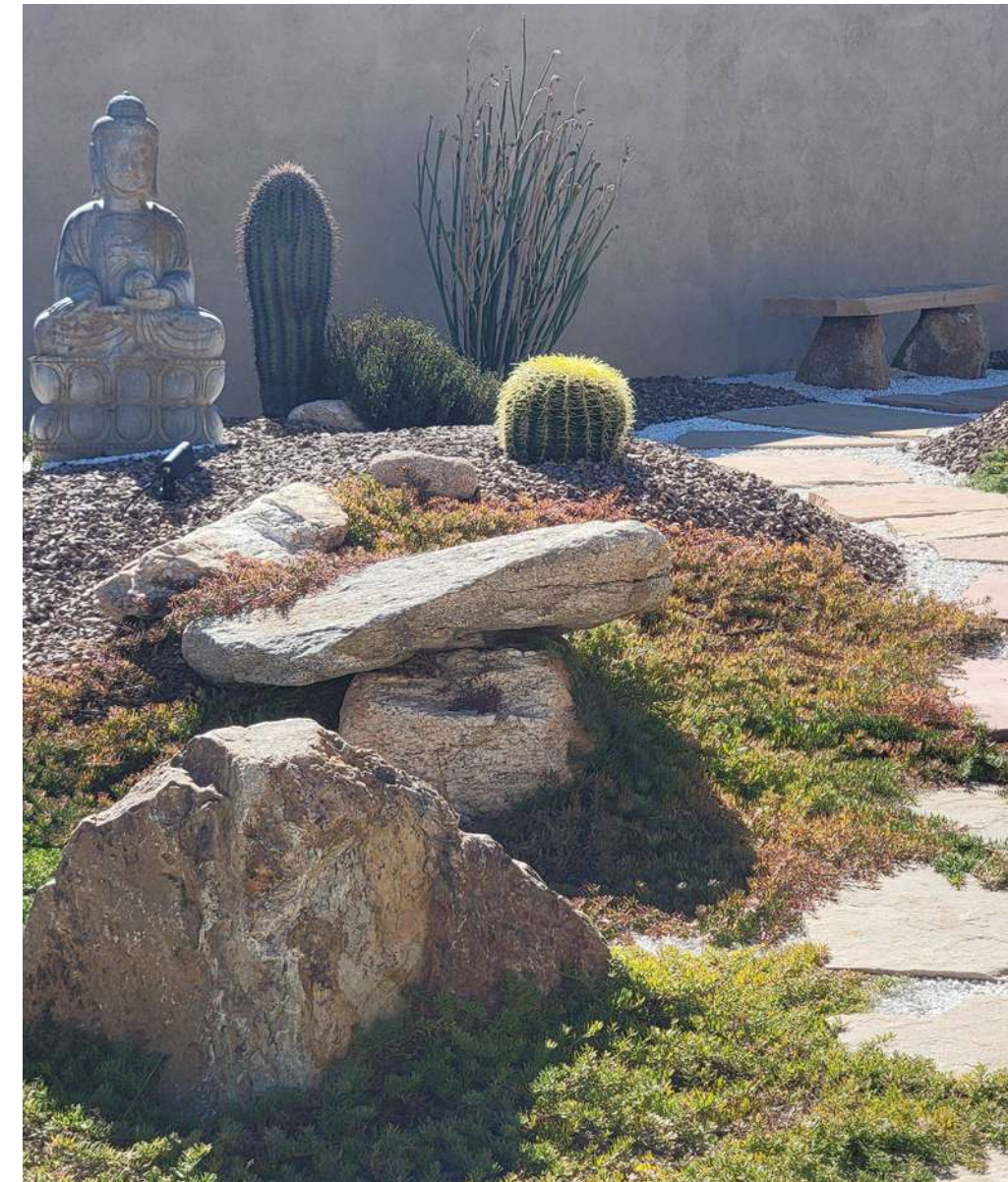
silver award

PEARSON RESIDENCE
Residential Category \$25,000 – \$100,000
Project Location: Tucson, AZ
Zone: 9b

Josh Gormally/ ALA, Artistic Landscape Architecture, LLC

Website: www.arlaar.com
Firm Location: Tucson, AZ

PHOTOGRAPHS BY JOSH GORMALLY



JUDGES' FEEDBACK:

This stunning design conquers a difficult site. Spatial awareness and expertise is apparent. The undulating lines, soft berms, layered materials and well-placed elements connect the architecture and gardens with the mountain view beyond. Zen touches are effectively used, especially the gate/capstone at the main entry.

silver award



PINNACLE HOUSE
Residential Category \$25,000 – \$100,000
Project Location: Hollis, NH
Zone: 5a

Bill Parker & Parker Garden Design

Website: www.parkergarden.com
Firm Location: Nashua, NH

PHOTOGRAPHS BY BARB YOUNG



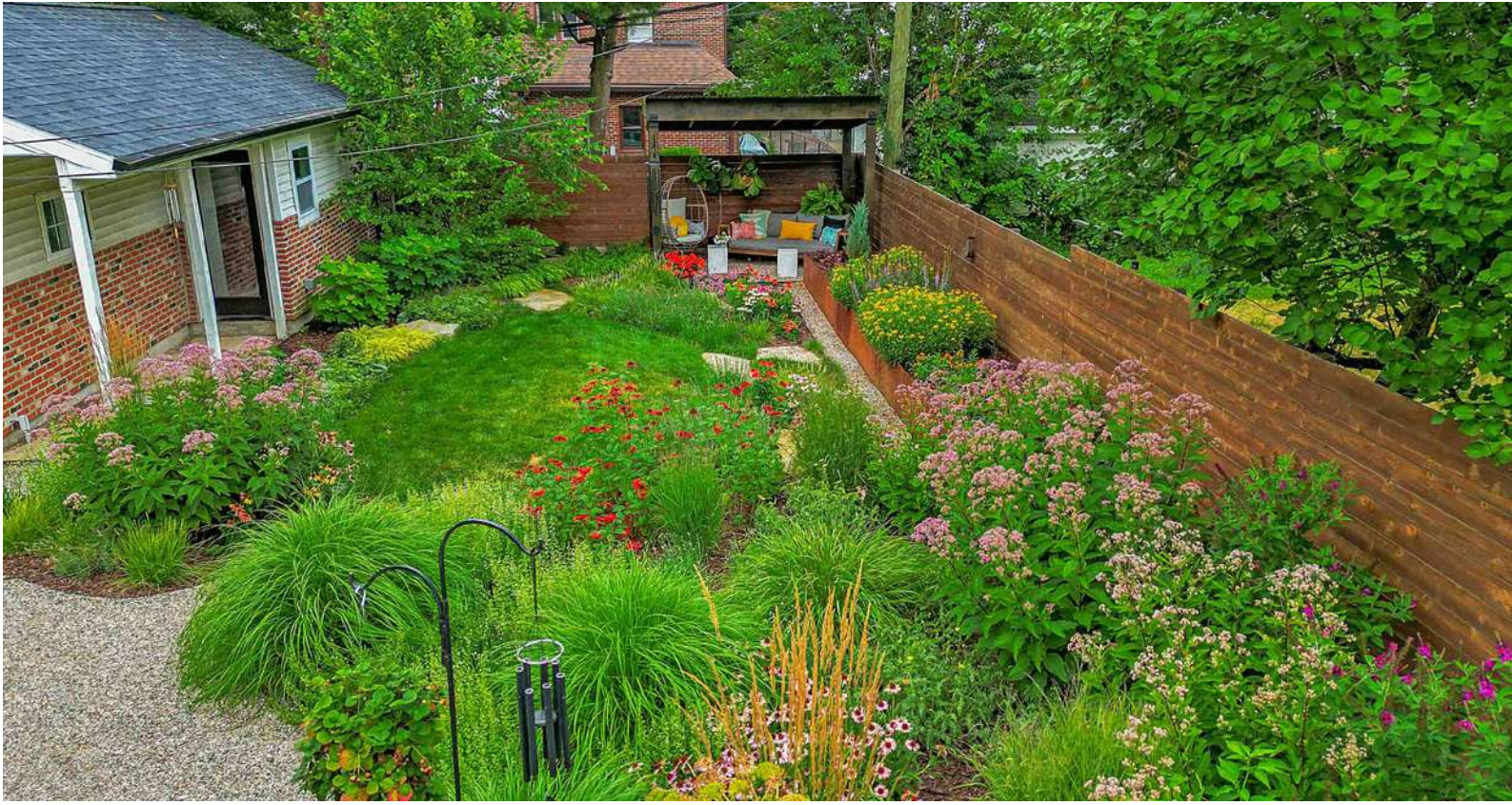
JUDGES' FEEDBACK:
The planting design displayed great seasonality. The hardscaping is well-executed and the walls and steps are perfect. What a nice transformation.

silver award

POLLINATOR HEAVEN
Residential Category \$25,000 – \$100,000
Project Location: Royal Oak, MI
Zone: 5

Jeremy F. Locke/ Great Lakes Landscape Design

Website: www.greatlakeslandscapedesign.com
Firm Location: Oak Park, MI



JUDGES' FEEDBACK:
The plantings are beautifully arranged, lush, and pollinator-friendly. Overall, the design is a wonderful, nature lover's garden with an abundance of colors, textures, and some spaces to enjoy the view.

bronze award



DELGADO RESIDENCE
Residential Category \$25,000 – \$100,000
Project Location: Tucson, AZ
Zone: 9b

Josh Gormally/ALA, Artistic Landscape Architecture, LLC

Website: www.arlaar.com
Firm Location: Tucson, AZ

PHOTOGRAPHS BY JOSH GORMALLY



JUDGES' FEEDBACK:
This is a tough site and the final project is engaging. I love the harvesting of rainwater, which is so important!

bronze award



MEQUON MODERN FARMHOUSE
Residential Category \$25,000 – \$100,000
Project Location: Mequon, WI
Zone: 5b

James Drzewiecki, CPLD & Hannah Paulson, Ginkgo Leaf Studio

Website: www.ginkgoleafstudio.net
Firm Location: Cedarburg, WI

PHOTOGRAPHS BY RENN KUHNEN PHOTOGRAPHY



JUDGES' FEEDBACK:
The materials and finishes in this design are beautiful. The plantings are lush with textural and color interest and they meet the client's requests. The individual elements are very well-executed.

DID YOU KNOW

NOT-SO-FUN FACTS ABOUT PLASTIC HORTICULTURAL POTS



SCAN ME

HEALTHY POTS, HEALTHY PLANET WANTS TO HELP BY...

- Supporting production of recycled pots
- Encouraging manufacturers to develop alternative, sustainable containers
- Increase demand for alternatives by inviting the community to make commitments



JOIN OUR COALITION TODAY!

WEBSITE: HealthyPotsHealthyPlanet.org

INSTAGRAM: @healthypotshealthyplanet @landscapedesigners

2023 award winners

Residential Over \$100,000





gold award

COURTYARD FOR A YOUNG FAMILY
 Residential Category Over \$100,000
 Project Location: Oakland, CA
 Zone: 10a

Winnie Creason & Plant Stars

Website: www.plantstars.com
 Firm Location: Berkeley, CA

PHOTOGRAPHS BY
 WINNIE CREASON (TOP RIGHT)
 JUDE PARKINSON-MORGAN (ALL OTHERS)

JUDGES' FEEDBACK:

This project packs a lot of punch into a small footprint. Great job unifying two dwellings. The steel planters are in excellent proportions to create unique spaces with appropriate furnishings. The cap on the center planter is well done and appreciated. The front entry planting is lovely and the house number on the steel works well.



gold award

GOLFE LESTE

Residential Category Over \$100,000

Project Location: Quinta do Lago, Algarve region, Portugal

Zone: 10b

McWilliam Studio

Website: www.mcwilliamstudio.com

Firm Location: Old Amersham, Buckinghamshire UK

PHOTOGRAPHS BY MARCELO LOPES



JUDGES' FEEDBACK:

Despite having a challenging site, admirable design solutions make this entry excel. The design flows well, sits comfortably on the land and ties very well to the architecture of the home. It also fulfills the client's needs and provides seamless indoor-outdoor living.

The drama and the play off the architecture is phenomenal. The entry water walk is fabulous. The walls are well-positioned and the contrasting colors work beautifully. The center courtyard is lovely and well appointed. The free-standing wall piece amongst the boulders is a splendid screening tool in a perfect color. The tension between the crisp steps and the boulders is delightful. Wonderful textural plantings complement the overall look and feel of the design.





gold award

IVES STREET PROJECT

Residential Category Over \$100,000

Project Location: North Haven, CT

Zone: 6b

Donna Christensen, Christensen Landscape Services

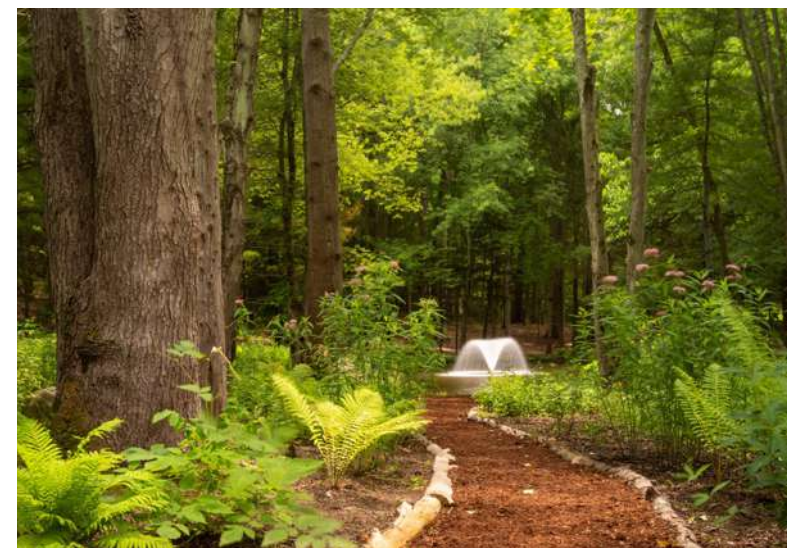
Website: www.christensenlandscape.com

Firm Location: Northford, CT

PHOTOGRAPHS BY NEIL LANDINO

JUDGES' FEEDBACK:

Beautiful materials, nice execution, and notable attention to detail make this entry stand out. The landscape elements blend superbly with the architecture, from the gates to the pergola and on. The terrace and water are wonderful, as well as the boardwalk and pond views.





gold award

MINIMALIST SOUNDSHORE RETREAT

Residential Category Over \$100,000
 Project Location: Shelter Island, NY
 Zone: 7a

**Vickie Cardaro/
 Buttercup Design Group**

Website: www.buttercupdesigngroup.com
 Firm Location: Shelter Island Heights, NY

PHOTOGRAPHS BY VICKIE CARDARO



JUDGES' FEEDBACK:

This simple, yet elegant design highlights the existing tree as a feature. Strong pavement form and patterns that parallel the planting alignments add to the design's depth and rich complexity. This is truly a stellar project and implementation.

The level change works nicely and the angular pool makes a nice sitting space. The entry planting works very well with architecture, as do the door planters.



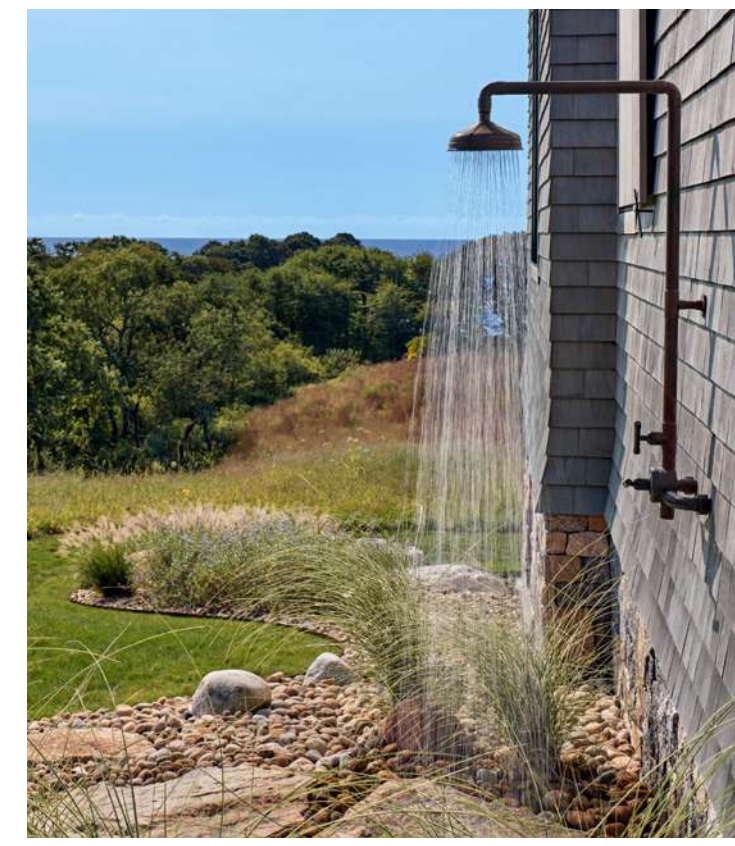
gold award

POINTER PERCH
Residential Category Over \$100,000
Project Location: Fishers Island, NY
Zone: 7a

Haver & Skolnick Architects in association with Race Rock Garden Company, Inc.

Website: www.haverskolnickarchitects.com
Firm Location: Roxbury, CT

PHOTOGRAPHS BY ROBERT BENSON PHOTOGRAPHY



JUDGES' FEEDBACK:

This beautiful project responds masterfully to both the clients' program and the site itself. I appreciate the light touch on the land, the capture of rainwater, permeable hardscape, removal of invasives, and general good stewardship of the land. The meadow landscape delivers a pitch-perfect sense of place. The restrained plant and color palette provide understated elegance.

gold award

REIMAGINED REMNANT

Residential Category Over \$100,000

Project Location: Little Compton, RI

Zone: 7a

Matthew Cunningham Landscape Design LLC

Website: www.matthew-cunningham.com

Firm Location: Stoneham, MA

PHOTOGRAPHS BY ANTHONY CRISAFULLI



JUDGES' FEEDBACK:

This beautiful project remains sensitive to the site and its history. A simple plant palette and timeless hardscape add to the understated elegance of the composition. The stile steps, the crabapple Alleé, and the fieldstone wall weaving through the sculptural heirloom trees are sheer poetry.



JUDGES' FEEDBACK:

The design supplies a lovely update to an existing pool. The steps are a wonderful proportion and delightfully softened with the turf. Switching to a circular fire pit and water feature really works to counter the straight lines and angles elsewhere. Great cactus "art" along the wall brings tasteful interest. The chairs at the fire pit and lounge area are fitting and to scale.



gold award

STEEL AND TURF
Residential Category Over \$100,000
Project Location: Tucson, AZ
Zone: 9a

Prideaux Design

Website: www.prideaux-design.com
Firm Location: Tucson, AZ

PHOTOGRAPHS BY FLETCHER AND CO.



gold award

SUBURBAN JUNGLE

Residential Category Over \$100,000

Project Location: Brookline, MA

Zone: 6b

Matthew Cunningham Landscape Design LLC

Website: www.matthew-cunningham.com

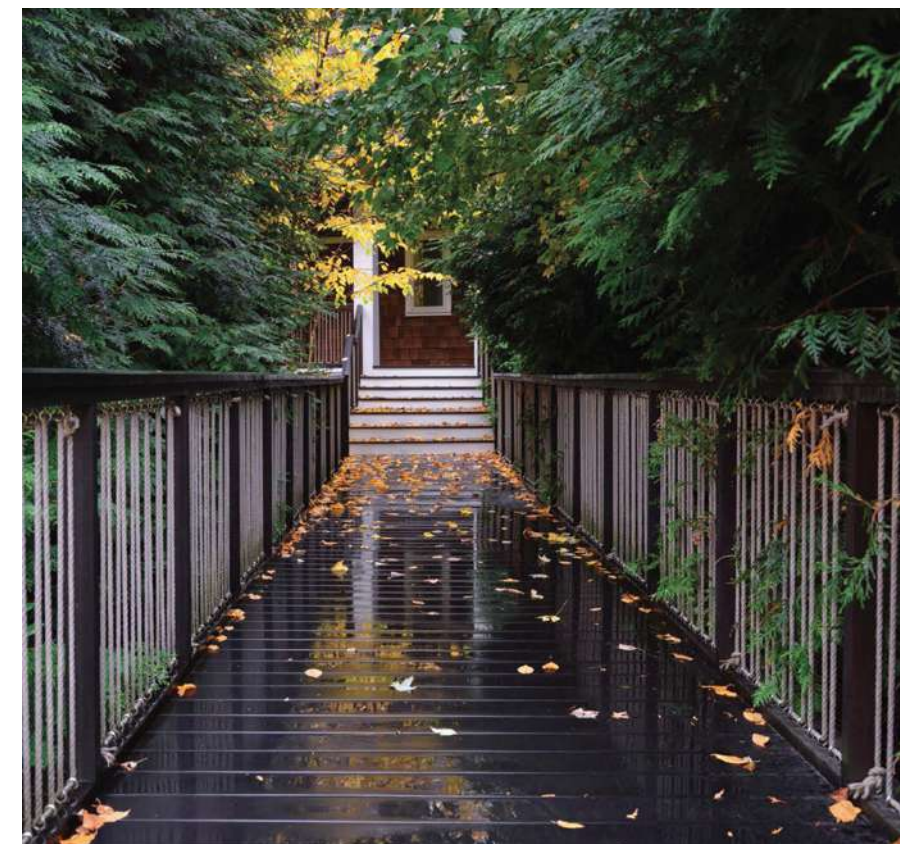
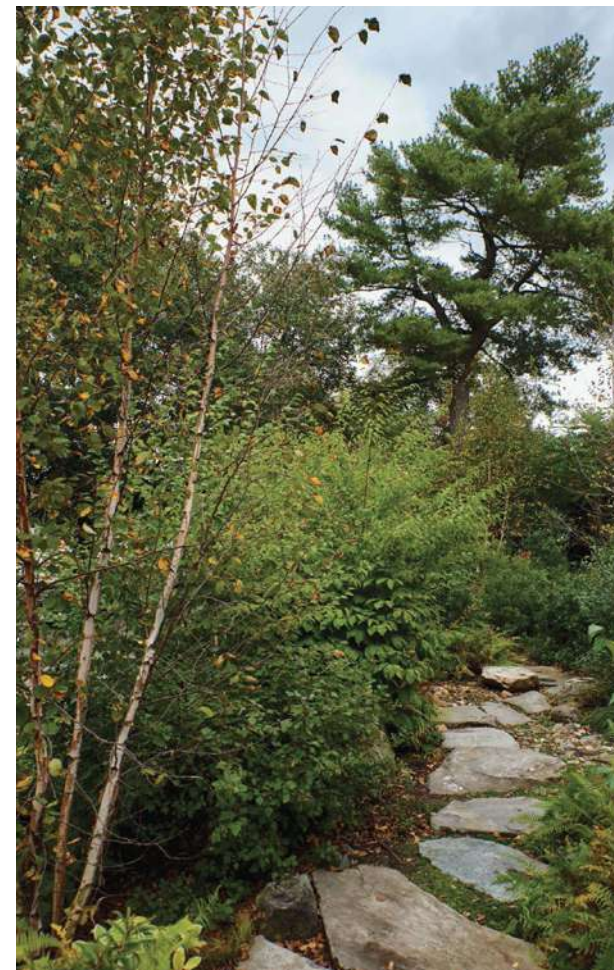
Firm Location: Stoneham, MA

PHOTOGRAPHS BY MATTHEW CUNNINGHAM



JUDGES' FEEDBACK:

The design furnishes an excellent solution to the clients' program. The use of stone and addition of topography and natural landforms is exceptional. The rope balusters are brilliant and really lend to the feeling of the space. You did a great job making a "New England" jungle. Kudos for the LEED Platinum certification.



gold award



TRANQUIL OAK WOODLAND

Residential Category Over \$100,000

Project Location: Sausalito, CA

Zone: 9b

Katharine Webster Inc.

Website: www.webstermla.com

Firm Location: San Francisco, CA

PHOTOGRAPHS BY CAITLIN ATKINSON



JUDGES' FEEDBACK:

This is a stunning garden for socializing and relaxing. It has great curb appeal, as well as interior circulation spaces and places within the small site. The design supplies excellent solutions to the client's needs and site constraints. The incredible photography adds to the work, making it an incredible living work of art.

silver award



CAMINO MONTE SOL
Residential Category Over \$100,000
Project Location: Alamo, CA
Zone: 9b

**Colin Miller,
Melissa Lee/
Envision
Landscape
Studio**

Website: www.envisionlandscapestudio.com
Firm Location: Walnut Creek, CA

PHOTOGRAPHS BY JOE DODD

JUDGES' FEEDBACK:

Beautiful textures and color blends set this design apart. Very appropriate furnishings and excellent lighting bring depth and feeling to the space. I love the fire pit area with the curved chairs and trees. You made a wonderful choice with the entry tapestry. There is a good blend of rectangular elements with the bar, fire pit, and water feature all bringing repetition.



silver award



CHESTNUT HILLSIDE
Residential Category Over \$100,000
Project Location: Newton, MA
Zone: 6b

**Matthew
Cunningham
Landscape
Design LLC**

Website: www.matthew-cunningham.com
Firm Location: Stoneham, MA

PHOTOGRAPHS BY
JANE MESSINGER (TOP)
MATTHEW CUNNINGHAM (ALL OTHERS)



JUDGES' FEEDBACK:

The simplicity of the clean-lined hardscape and mostly green on green plantings with subtle tints of color in a limited palette create a serene and elegant landscape. The work is well-executed. The landscape and architecture complement one another in terms of both style and materials palette.

silver award



silver award

FORM & FLOW
Residential Category Over \$100,000
Project Location: Lafayette, CA
Zone: 9b

Foss Garden Design

Website: www.fossgardens.com
Firm Location: Berkeley, CA

PHOTOGRAPHS BY JUDE PARKINSON-MORGAN



JUDGES' FEEDBACK:
This design ushers us into a very nice, tranquil landscape. It is wonderful, soft, and established. The sitting area and plantings out under the trees are appreciated. The design is open and connects the house with the surroundings.

EAST MEETS MIDWEST
Residential Category Over \$100,000
Project Location: Sawyer, MI
Zone: 6a

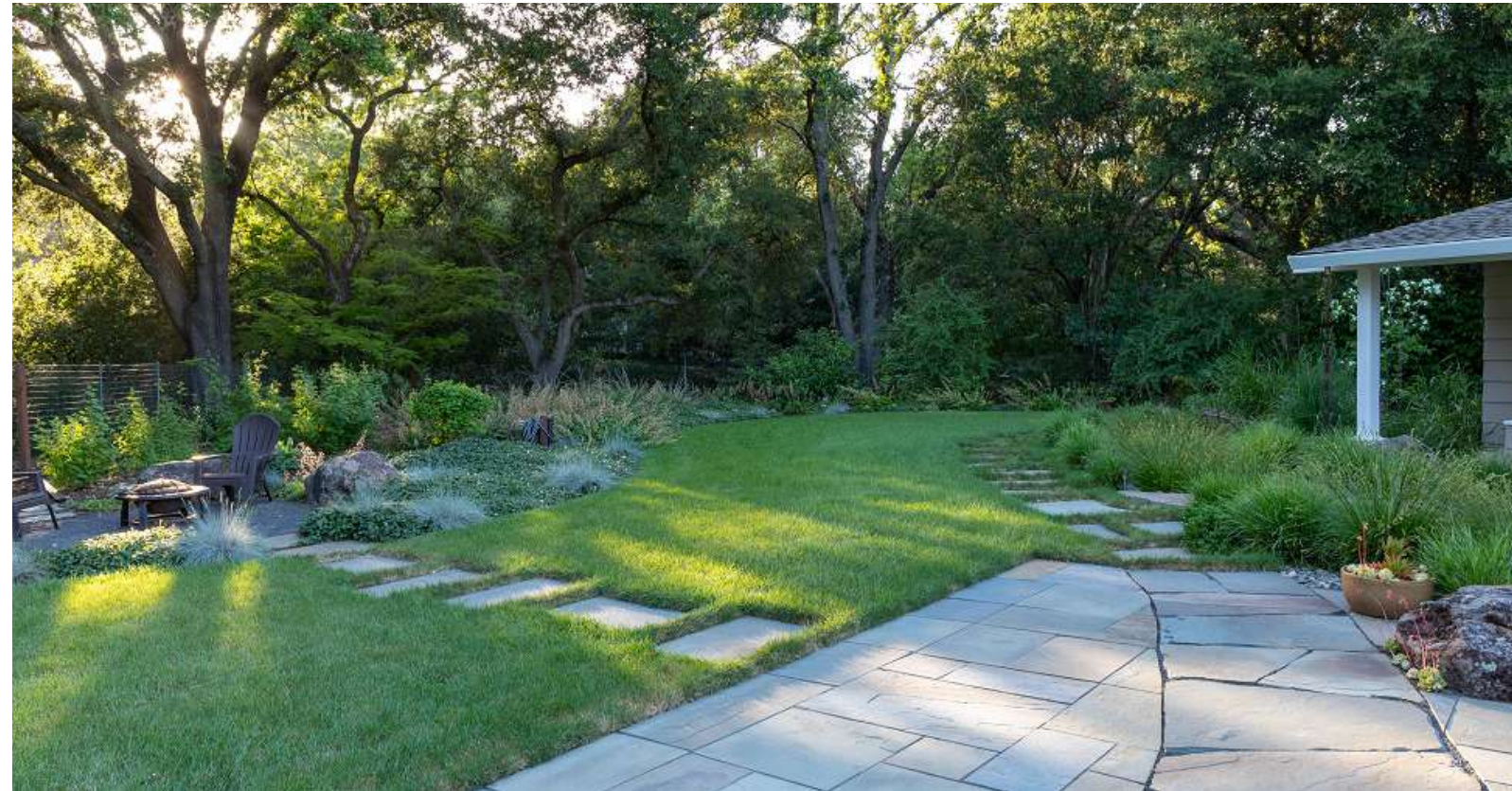
RootBound, LLC

Website: www.rootbound.com
Firm Location: Benton Harbor, MI

PHOTOGRAPHS BY
MARK PADEN (TOP)
FOSTER WOODRUFF (ALL OTHERS)



JUDGES' FEEDBACK:
This is a wonderful design concept and execution. The moon gate is a nice addition to tie existing buildings together.



silver award



FRIEDLEIN PROJECT
Residential Category Over \$100,000
Project Location: La Jolla San Diego, CA
Zone: 10b

Joel Berlin/ AnandaScapes LLC

Website: www.anandasclapes.com
Firm Location: San Diego, CA

PHOTOGRAPHS BY ANANDASCAPES LLC



JUDGES' FEEDBACK:

This design does a nice job with materials selection, color palette and plants; they are harmonious with the architecture and very site-appropriate.

Every inch of the outdoor space was designed. There is good front space definition with a form that functions.



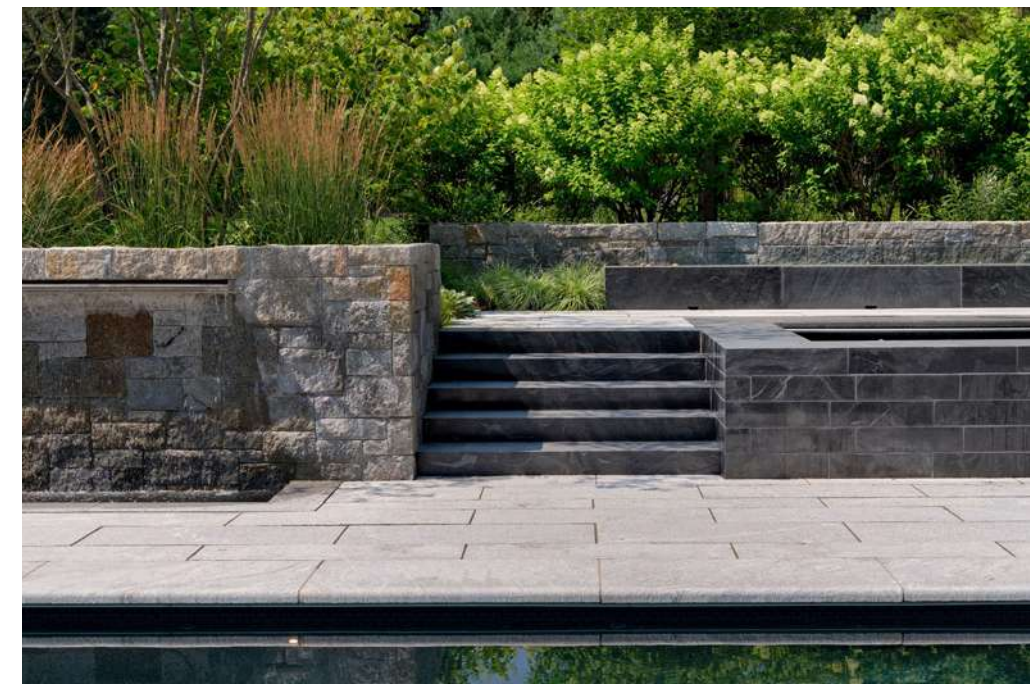
silver award

HIGHLAND GARDEN
Residential Category Over \$100,000
Project Location: Weston, MA
Zone: 6b

Matthew Cunningham Landscape Design LLC

Website: www.matthew-cunningham.com
Firm Location: Stoneham, MA

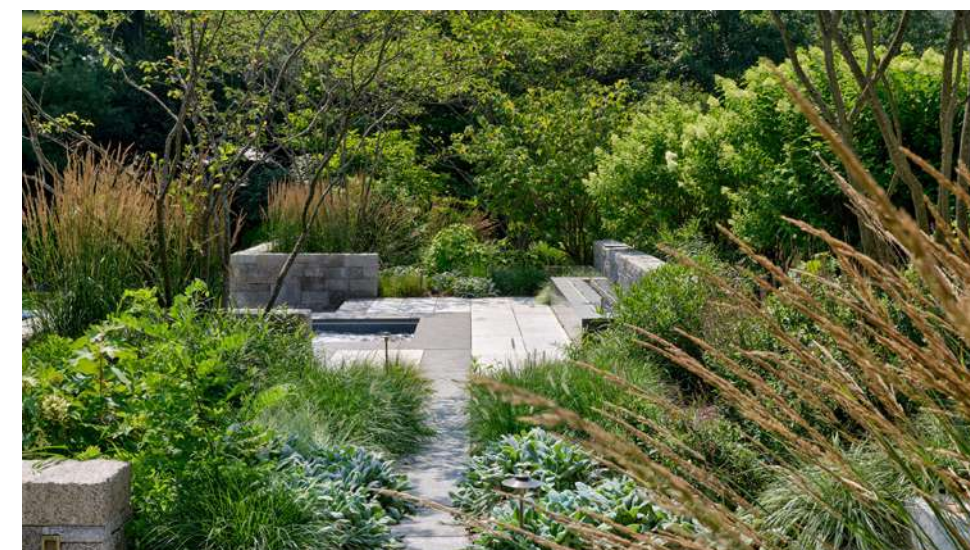
PHOTOGRAPHS BY MATTHEW CUNNINGHAM



JUDGES' FEEDBACK:

The work is well-executed with a high degree of difficulty. The hardscape materials palette is beautiful. The range of texture and pattern and restrained colorway is very successful. I appreciate the soft form of plantings against the crisp lines of the hardscape.

Gorgeous transitions and harmony in the hardscape complement the overall design. The stonework is amazing as are water sheets, railings, and all details.



silver award

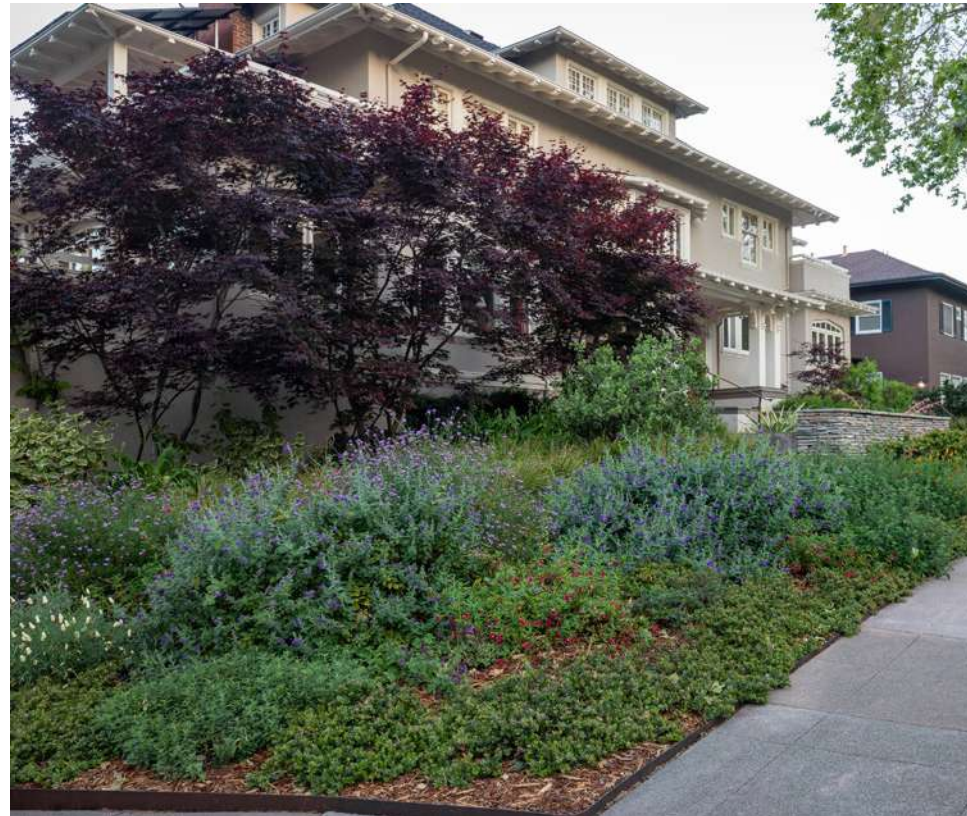


LIFE AFTER LAWN
Residential Category Over \$100,000
Project Location: Piedmont, CA
Zone: 10a

Winnie Creason & Plant Stars

Website: www.plantstars.com
Firm Location: Berkeley, CA

PHOTOGRAPHS BY JUDE PARKINSON-MORGAN



JUDGES' FEEDBACK:
You performed a well-done update of this 1909 home. The new landscape reads seamlessly with architecture. Kudos for water conservation.

silver award

MEDITERRANEAN TRANSFORMATION REPLACES LAWN AND POOL

Residential Category Over \$100,000
Project Location: Ross, CA
Zone: 9b

Eileen Kelly, Dig Your Garden Landscape Design

Website: www.digyourgarden.com
Firm Location: San Anselmo, CA

PHOTOGRAPHS BY EILEEN KELLY



JUDGES' FEEDBACK:
The design makes a beautiful transformation of the property. The lovely plant/color palette and nice flow in the composition add to the idyllic feel. I appreciate the low-water demand plantings, efficient irrigation, permeable paving, and pollinator support.



silver award

MID-CENTURY MODERN GEM

Residential Category Over \$100,000
Project Location: Woodland Hills, CA
Zone: 10b

Urban Oasis Landscape Design

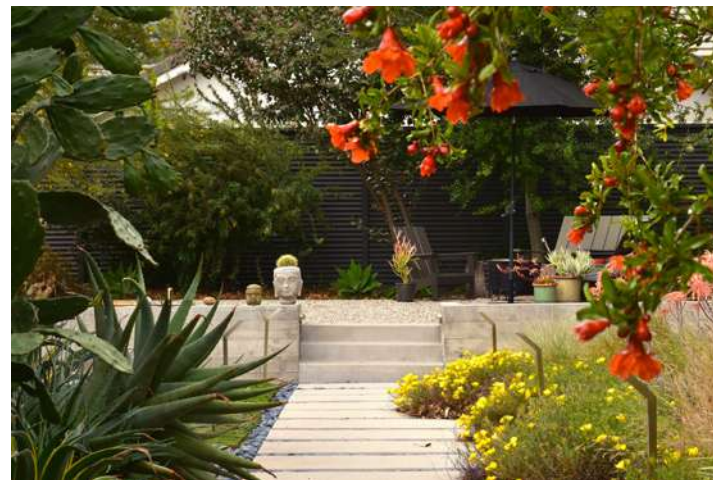
Website: www.urban oasis-la.com
Firm Location: Los Angeles, CA

PHOTOGRAPHS BY DEBORAH GLIKSMAN

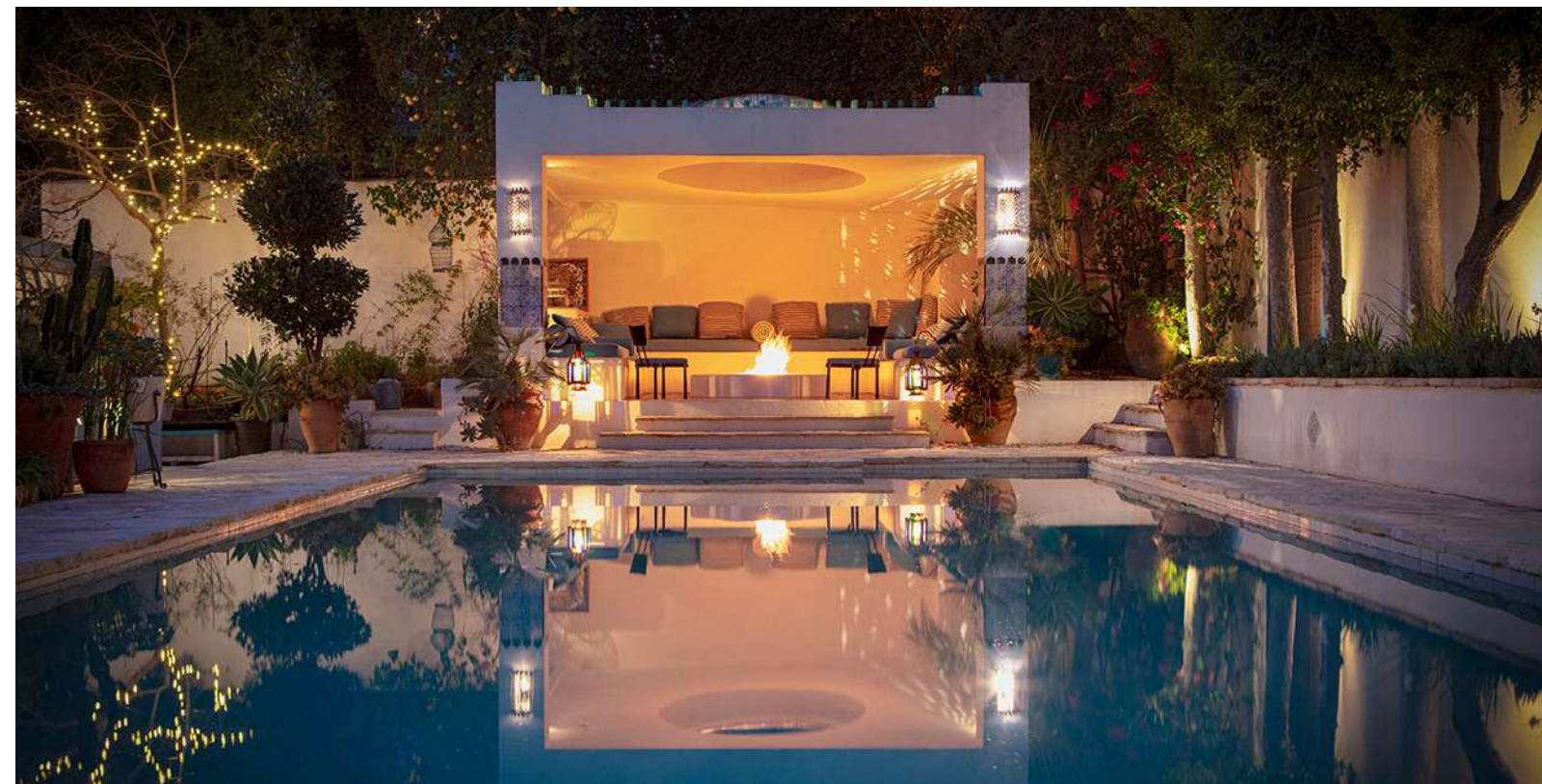


JUDGES' FEEDBACK:

The architecture, landscape, and site form a seamless composition. A diverse and lively planting palette carries the theme throughout the property. Kudos for water conservation, biodiversity, permeable surfaces, on-site runoff capture, and other sustainable measures – including giving new life to existing housing. Breaking the backyard into two levels is an especially successful design solution. Your materials selection is spot on. Well done.



silver award



PHOTOGRAPH BY ROSS WHITAKER

OUT OF THE BLUE MEDITERRANEAN

Residential Category Over \$100,000
Project Location: West Hollywood Hills, CA
Zone: 10b

Laura Morton Design

Website: www.lauramortondesign.com
Firm Location: Los Angeles, CA

PHOTOGRAPHS BY



PHOTOGRAPH BY ROSS WHITAKER



PHOTOGRAPH BY JEFF DUNAS



PHOTOGRAPH BY ROSS WHITAKER

JUDGES' FEEDBACK:

This design is whimsical and fun. Excellent job giving new life to existing elements and layout. The calming colors of the new patio deck and the water feature are transforming.

silver award



SKYLINE MEADOW FARM
Residential Category Over \$100,000
Project Location: Oakland, CA
Zone: 10a

Mullein Designs

Website: www.mulleindesigns.com
Firm Location: Berkeley, CA

PHOTOGRAPHS BY JUDE PARKINSON-MORGAN



JUDGES' FEEDBACK:

The beauty of this project is enhanced with lovely plantings that complement their spaces and do not block views.

silver award



SMALLER IS BETTER
Residential Category Over \$100,000
Project Location: Tucson, AZ
Zone: 9a

Prideaux Design

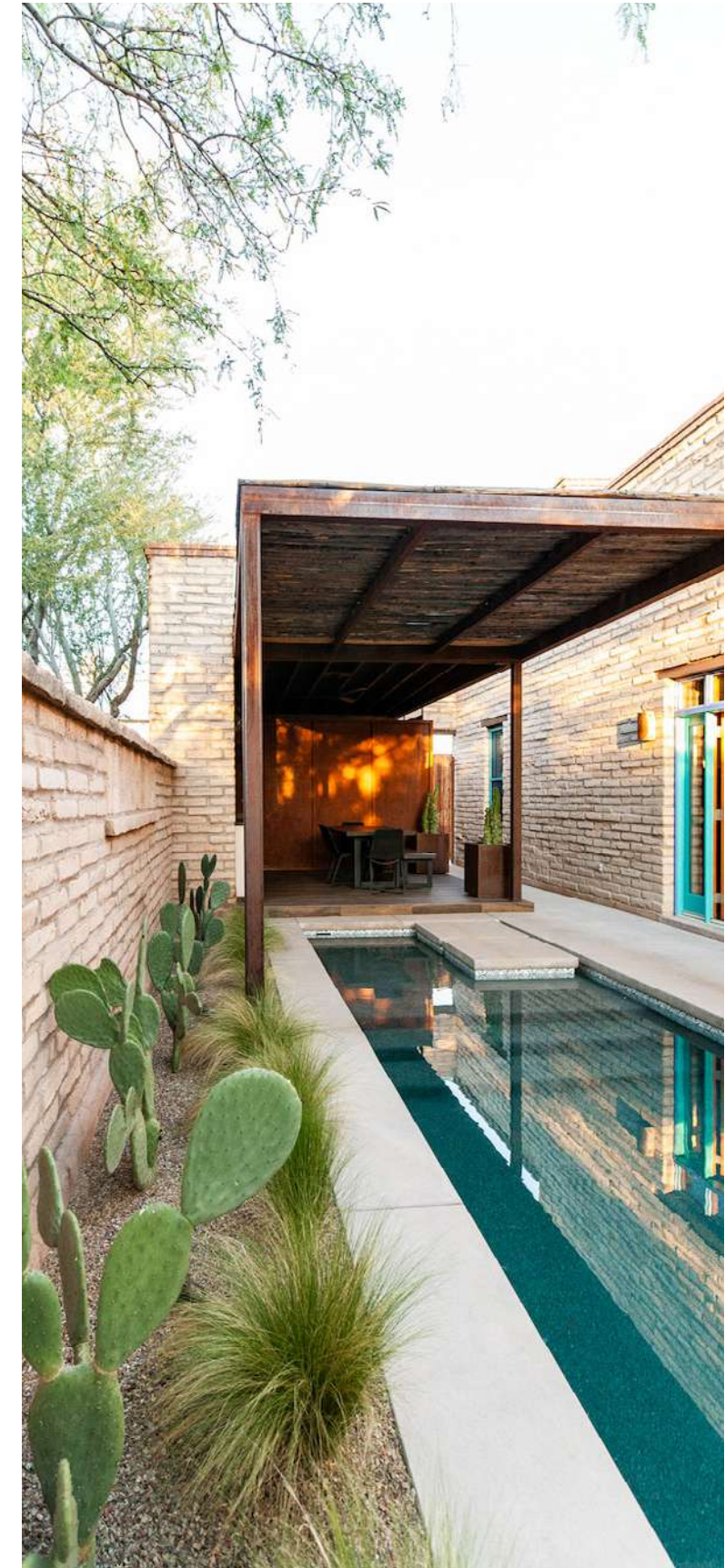
Website: www.prideaux-design.com
Firm Location: Tucson, AZ

PHOTOGRAPHS BY FLETCHER AND CO.



JUDGES' FEEDBACK:

A lot of function is packed into a small footprint without feeling constrained. The color palette and materials play well with the house and pull the whole space together. The design is colorful, yet calm and inviting. The use of regional materials and the contrast of the rustic and industrial materials adds personality and local flavor. Well done.



silver award



TUDOR ESTATE AND GROUNDS

Residential Category Over \$100,000
Project Location: Bexley, OH
Zone: 6a

Hidden Creek Landscaping, Inc.

Website: www.hiddencreeklanscaping.com
Firm Location: Hilliard, OH

PHOTOGRAPHS BY PRESTIGE PRO PHOTO -
ASHTON ONESKO

bronze award



CLASSIC GREENWICH MAKEOVER

Residential Category Over \$100,000
Project Location: Greenwich, CT
Zone: 7a

McDermott Landscape Design

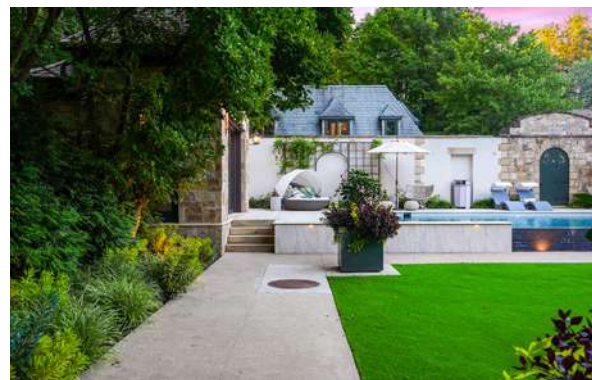
Website: www.mcdermottlandscapedesign.com
Firm Location: Portsmouth, NH

PHOTOGRAPHS BY MCDERMOTT LANDSCAPE DESIGN



JUDGES' FEEDBACK:

This is a difficult site. The spaces are linked together with the paths, walls, and plantings. The individual garden forms work well within their context. The levels work wonderfully and the lighting is superb.



JUDGES' FEEDBACK:

I appreciate the clean lines and simplicity of the design. The gardens, structures and setting create a seamless whole. The new work is timeless and lasting.

bronze award



ROMANTIC ECLECTIC
Residential Category Over \$100,000
Project Location: Palo Alto, CA
Zone: 9b

Verdance Landscape Architecture

Website: www.verdancedesign.com
Firm Location: Palo Alto, CA

PHOTOGRAPHS BY JUDE PARKINSON-MORGAN



JUDGES' FEEDBACK:

The design is well-built and a big improvement on the previous landscaping. Losing the lawn opened nice space for change. Adding height and separation from the street on the veggie garden side of the house to create privacy and an eclectic planting palette added to the success of the design. I appreciate the increased permeability and reduced water demand of the new garden.



bronze award



SERENITY NOW
Residential Category Over \$100,000
Project Location: Lexington, KY
Zone: 6b

Andrea Wilson Mueller/ Inside Out Landscape Design, LLC

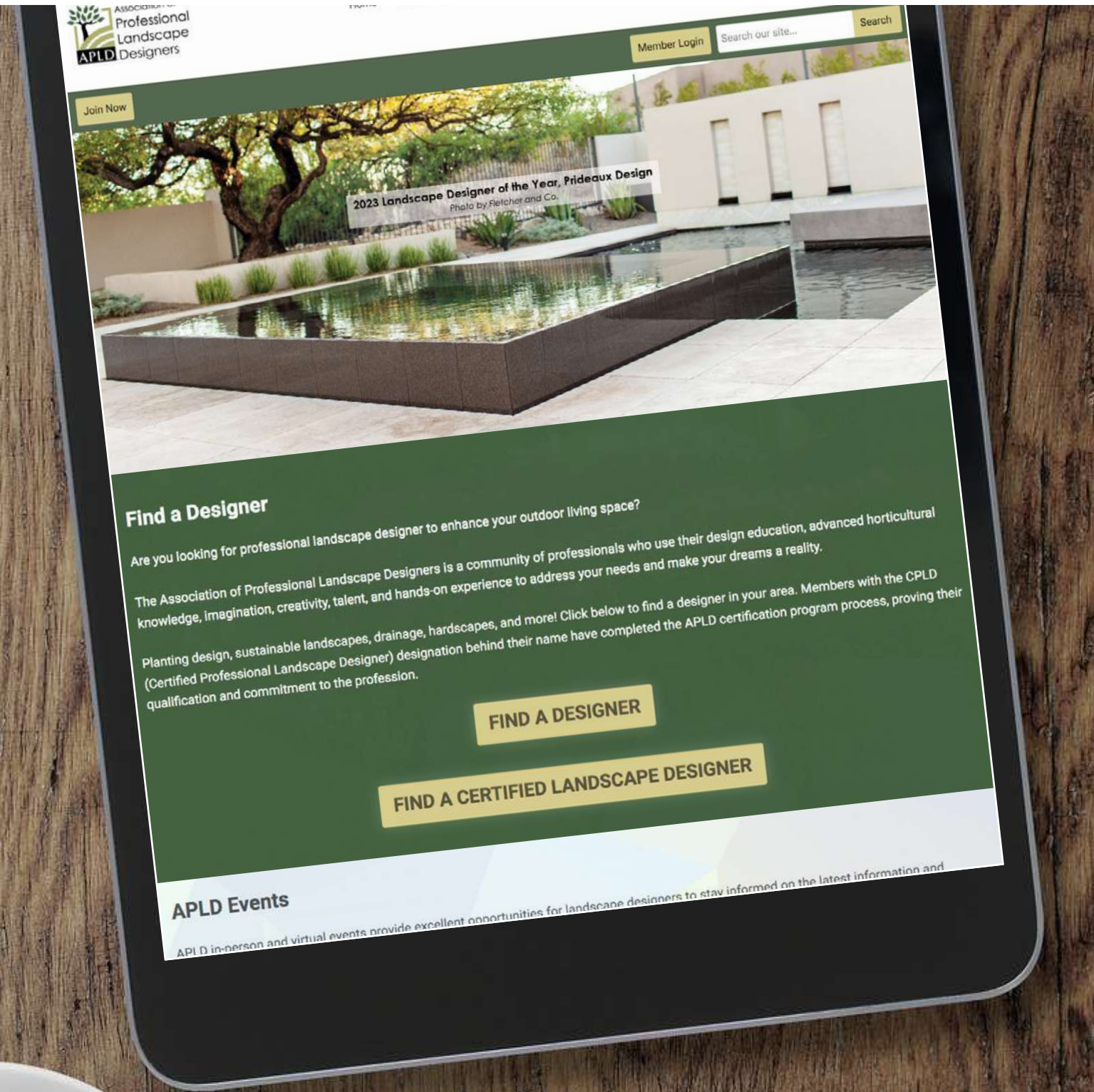
Website: www.kentuckylandscapedesign.com
Firm Location: Frankfort, KY

PHOTOGRAPHS BY ANDREA WILSON MUELLER

JUDGES' FEEDBACK:

The upper and interior views are greatly improved and very well done. The paving "mosaic" is very successful and the night lighting adds another dimension.





visit the website at
www.apld.org

2023 award winners

Planting Design



silver award



**ESTATE GARDEN
LAWN REPLACEMENT**
Planting Design Category
Project Location: Hillsborough, CA
Zone: 10a

**Kristen
Rudger
Landscape
Design**

Website: www.rudgerlandscapes.com
Firm Location: Belmont, CA

PHOTOGRAPHS BY JEFF BARTEE



JUDGES' FEEDBACK:
This is an impressive transformation and successful reduction in the front lawn. The plant list is robust and plantings are done in large groupings to have more visual impact. The color palette is soothing with seasonal interest. The plant materials were carefully chosen to support wildlife. Roses on the arbor are a lovely focal point and destination.

silver award



HAMMERSMITH GARDEN
Planting Design Category
Project Location: London, UK
Zone: 9a

**Jo Thompson
Landscape and
Garden Design**

Website: www.jothompson-garden-design.co.uk
Firm Location: London and East Sussex, UK

PHOTOGRAPHS BY RACHEL WARNE



JUDGES' FEEDBACK:
This design created a wonderful, lush garden with lots of little places to turn and enjoy the plants. The enchanted creation of an overhead plane with the climbing roses adds to the verdant delight of the space.

silver award



2023 award winner

Non-Residential Over \$500,000

WETLAND TO NATIVE WONDERLAND

Planting Design Category
Project Location: Frankfort, KY
Zone: 6b

**Andrea Wilson
Mueller, Inside
Out Landscape
Design, LLC**

Website: www.kentuckylandscapedesign.com
Firm Location: Frankfort, KY

PHOTOGRAPHS BY ANDREA WILSON MUELLER



JUDGES' FEEDBACK:

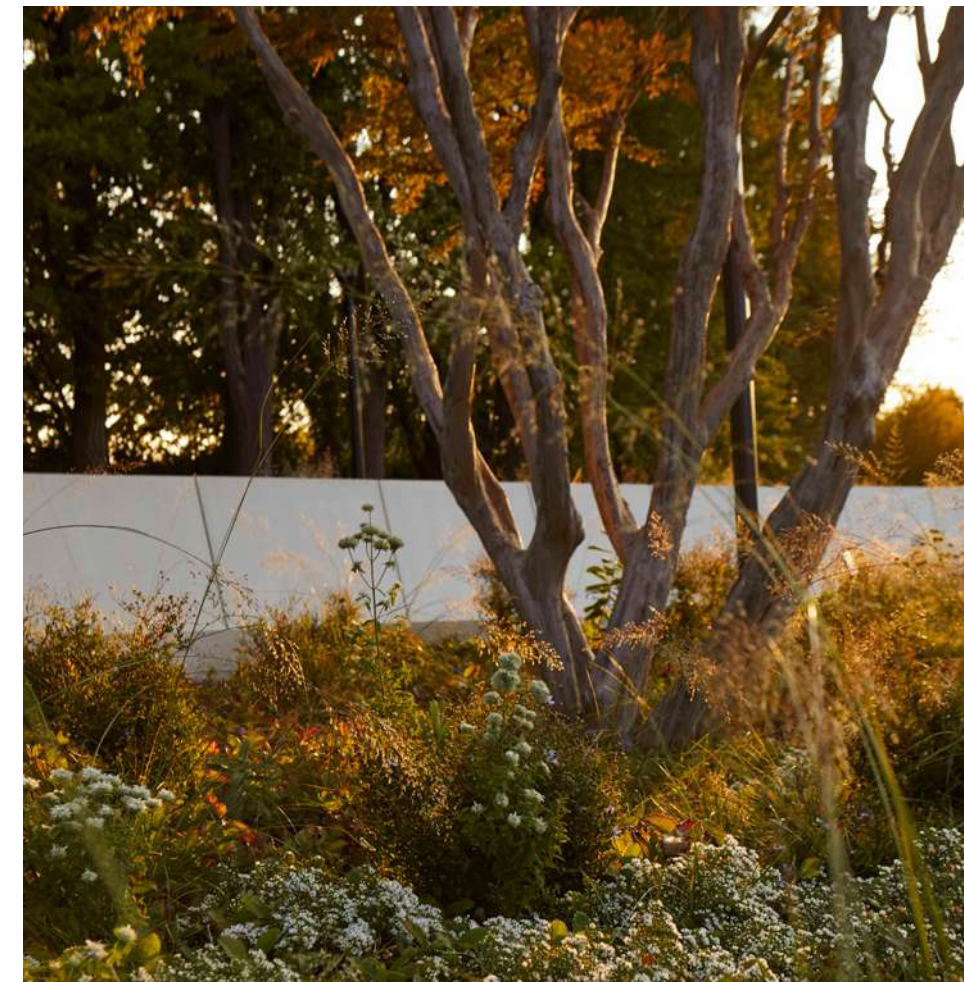
I love the layering and use of native plants to solve the water issues. The designer did a great job of combining plants for color and seasonal usage. A lovely project that met all the needs.



gold award



PHOTOGRAPH BY BROOKLYN BOTANIC GARDEN



PHOTOGRAPH BY VERA COMPLJOJ

**THE ROBERT W. WILSON OVERLOOK,
BROOKLYN BOTANIC GARDEN**

Non-Residential Over \$500,000

Project Location: Brooklyn, NY

Zone: 7b

**Weiss/Manfredi,
Wolf Landscape
Architecture, and
SiteWorks**

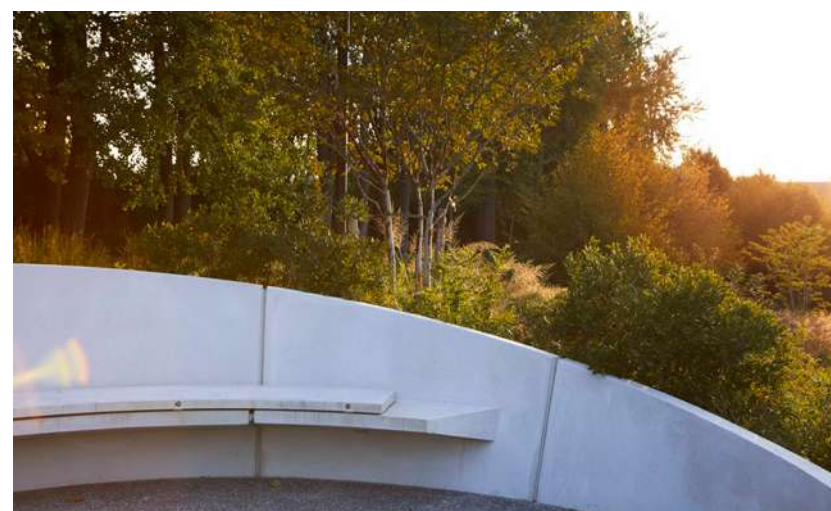
Website: www.wolflandscape.com

Firm Location: Groton, MA

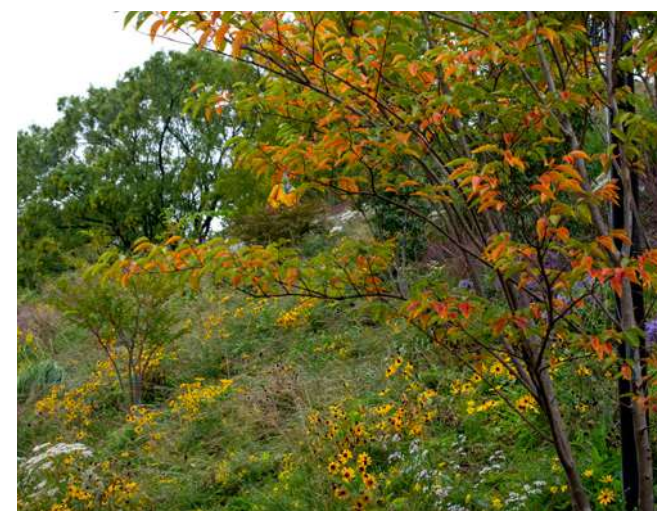
JUDGES' FEEDBACK:

I like the way people can get up close and personal with the plants. The flow of the walks is very pleasing with a nice selection of native plants.

This is a perfect example of how accessibility can BE the design rather than an appendage to it.



PHOTOGRAPH BY VERA COMPLJOJ

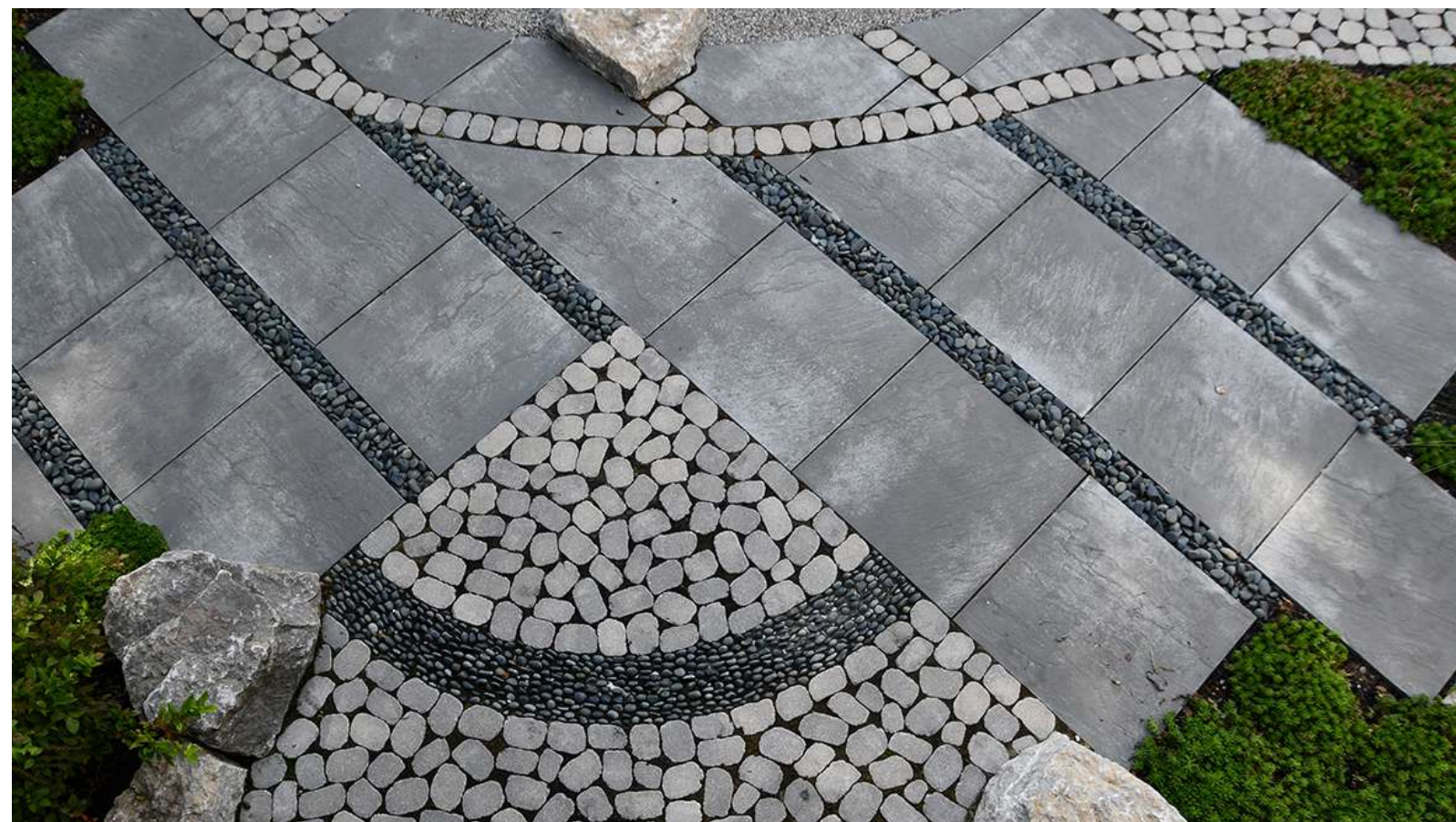


PHOTOGRAPH BY BROOKLYN BOTANIC GARDEN

silver award

2023 award winners

Details



TEXTURAL TRANQUILITY

Details Category

Project Location: Lexington, KY

Zone: 6b

**Andrea Wilson
Mueller/Inside
Out Landscape
Design, LLC**

Website: www.kentuckylandscapedesign.com

Firm Location: Frankfort, KY

PHOTOGRAPHS BY ANDREA WILSON MUELLER



JUDGES' FEEDBACK:

This is an amazing transformation with a beautiful design and exquisite attention to detail. Natural and manmade materials are seamlessly mixed and matched.



silver award



PHOTOGRAPH BY VERDANCE LANDSCAPE ARCHITECTURE

ROMANTIC ECLECTIC ARBOR

Details Category
Project Location: Palo Alto, CA
Zone: 9b

Verdance Landscape Architecture

Website: www.verdancedesign.com
Firm Location: Palo Alto, CA



PHOTOGRAPH BY JUDE PARKINSON-MORGAN



PHOTOGRAPH BY VERDANCE LANDSCAPE ARCHITECTURE

JUDGES' FEEDBACK:

What a transformation! I love the arbor idea and the mirror of its shape on the ground plane with the pavers. The shadow on the wall adds another element of interest to this charming space.

2023 award winners

Show Gardens



gold award



PHOTOGRAPHS BY RACHEL WISNIEWSKI

JUDGES' FEEDBACK:

The color palette, water feature, clever garden, and the shed all come together to create a beautiful vignette. I would hire this designer!

I love the circle design, the walls, and the water feature. Even the inside of the building had the same chair as outside – nice touch.



PHOTOGRAPH BY DAN CHOMUK



PHOTOGRAPH BY SUSAN COHAN



PHOTOGRAPH BY DAN CHOMUK

A GARDEN OF ONE'S OWN
 Show Gardens Category
 Project Location: Philadelphia, PA
 Zone: 7a

Susan Cohan

Website: www.susancohangardens.com
 Firm Location: Boonton, NJ

gold award



JUDGES' FEEDBACK:

This show garden is a scientific, creative space where one can hear the bio sonification. The garden is beyond sensitive! The attention to sustainability, biodiversity, and carbon sequestration are all great ideas on display in a well-designed garden.



THE INNER LANDSCAPE

Show Gardens Category

Project Location: FDR Park, Philadelphia, PA

Zone: 7b

Refugia Design

Website: www.refugiadesign.com

Firm Location: Bala Cynwyd, PA

bronze award

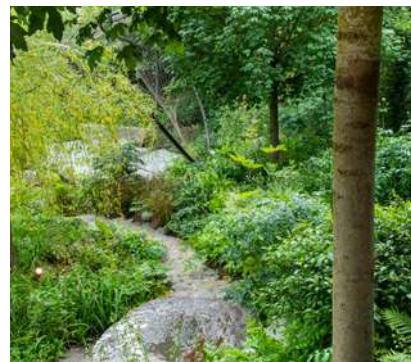


**THE WEDGWOOD GARDEN,
RHS CHELSEA FLOWER SHOW 2018**
Show Gardens Category
Project Location: London, UK
Zone: 9a

Jo Thompson Landscape and Garden Design

Website: www.jothompson-garden-design.co.uk
Firm Location: London and East Sussex, UK

PHOTOGRAPHS BY MARIANNE MAJERUS



JUDGES' FEEDBACK:

This is a wonderful garden with lush plants, but the highlight is the sculpture. Beautifully done.

2023 award winners

Small Gardens





gold award

EMBASSY ROW TOWNHOUSE

Small Gardens Category
Project Location: Washington, D.C.
Zone: 7a

Horn Landscape Architecture

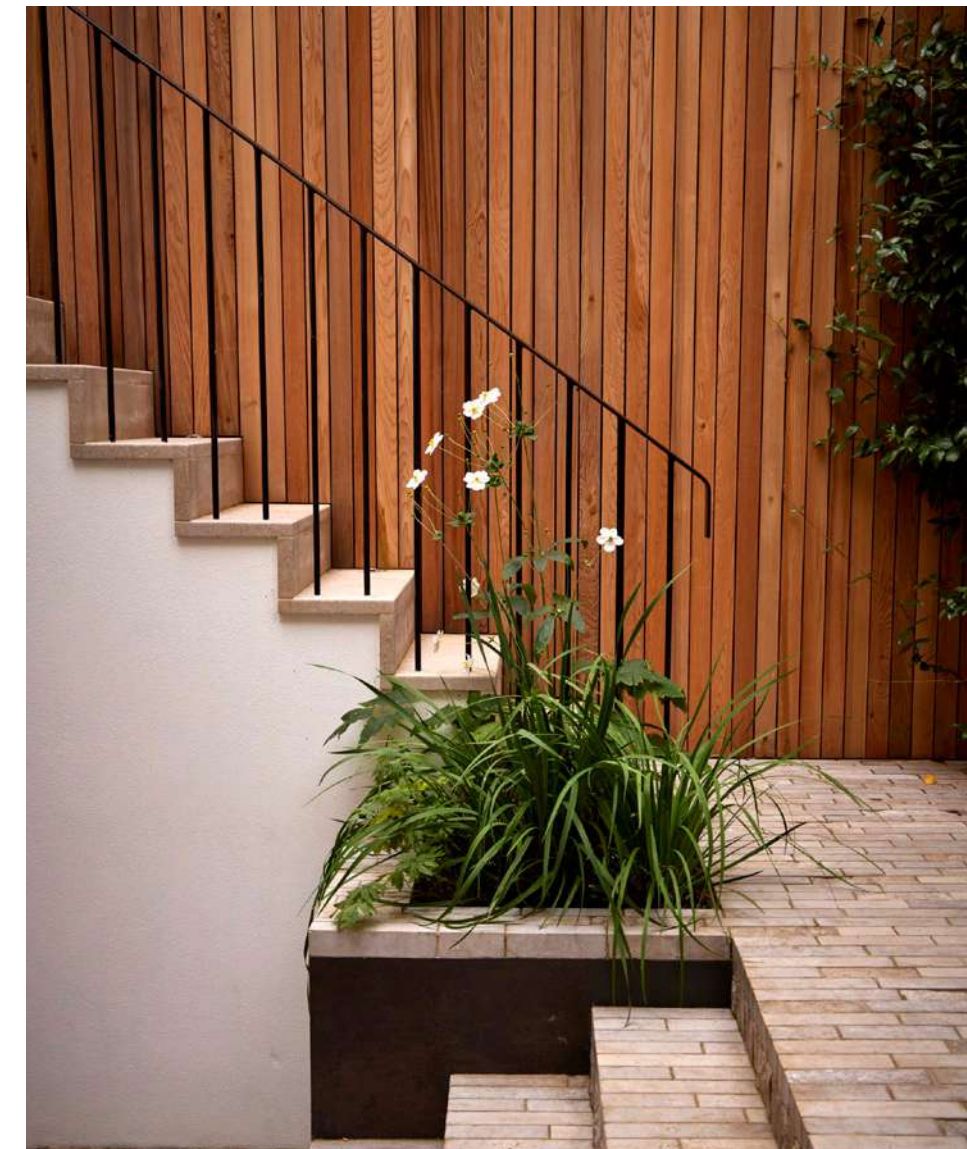
Website: www.hornandco.com
Firm Location: Arlington, VA

PHOTOGRAPHS BY STACY ZARING GOLDBERG



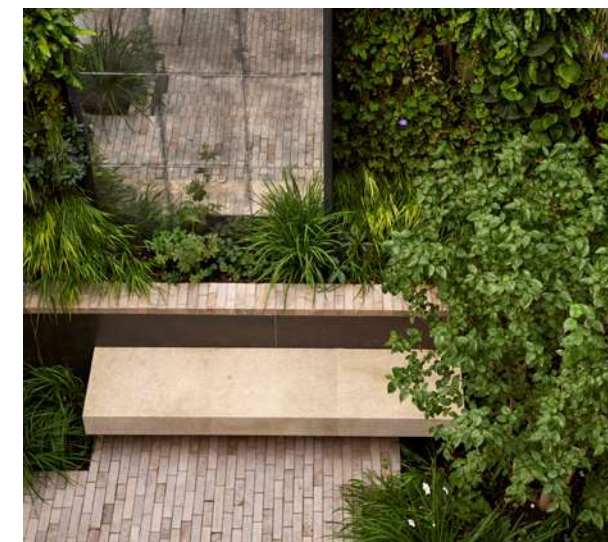
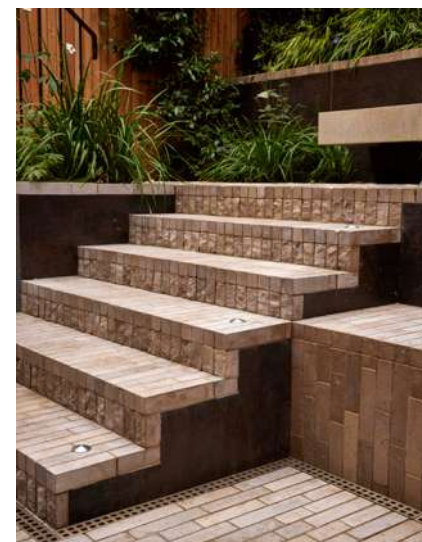
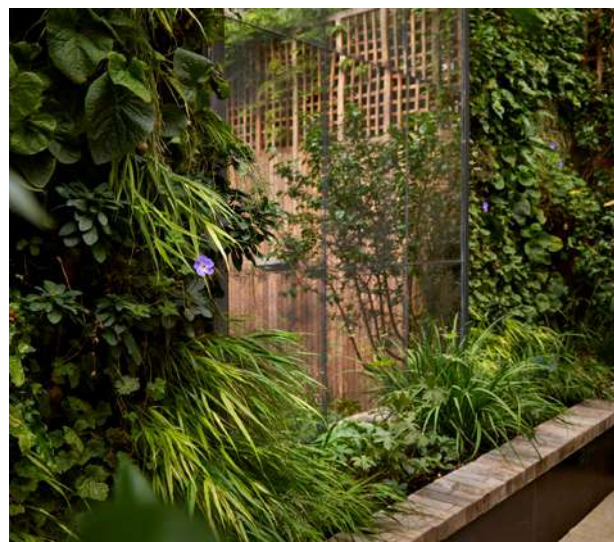
JUDGES' FEEDBACK:
This is a fantastic project with great detailing. The hardscape materials unify the rooms into one luxurious space.

gold award



JUDGES' FEEDBACK:

The use of vertical space and plant layering is exceptional, making the space seem bigger and very lush and inviting. The well-chosen materials seamlessly blend the garden room with the main house. The ornamental drain grate not only solves the drainage issue, it has a finishing touch effect. Every square inch of this small space appears to be maximized for functionality and aesthetics.



KENSINGTON COURTYARD

Small Gardens Category

Project Location: Kensington, London

Zone: 9a

McWilliam Studio

Website: www.mcwilliamstudio.com

Firm Location: Old Amersham, Buckinghamshire, UK

PHOTOGRAPHS BY ALISTER THORPE

gold award



SKYLINE SPRINGS COURTYARD

Small Gardens Category
Project Location: Tucson, AZ
Zone: 9a

Prideaux Design

Website: www.prideaux-design.com
Firm Location: Tucson, AZ

PHOTOGRAPHS BY FLETCHER AND CO.



JUDGES' FEEDBACK:

This is beautiful, clean, and fun. The design is a far more interesting and welcoming entrance space than what was there previously. The rusted metal unites the house/brick material with the new entry space and brings warmth that contrasts with the cool plant palette and concrete surfaces.

silver award



**CAPITOL HILL
COURTYARD RETREAT**
Small Gardens Category
Project Location: Washington, D.C.
Zone: 7a/7b

Studio AKA

Website: www.studio-aka.com
Firm Location: Washington, D.C.

PHOTOGRAPHS BY ALLEN RUSS FOR STUDIO AKA LLC



JUDGES' FEEDBACK:
This is a beautiful transformation. Undulating patio edges make for a pleasant journey through an otherwise straight space. The change in hardscape materials provides excellent spatial definition. Effective plant layering makes for a cozy space.

silver award



COLORFUL CONTEMPORARY
Small Gardens Category
Project Location: Sunnyvale, CA
Zone: 9a

Blue Hibiscus Gardens

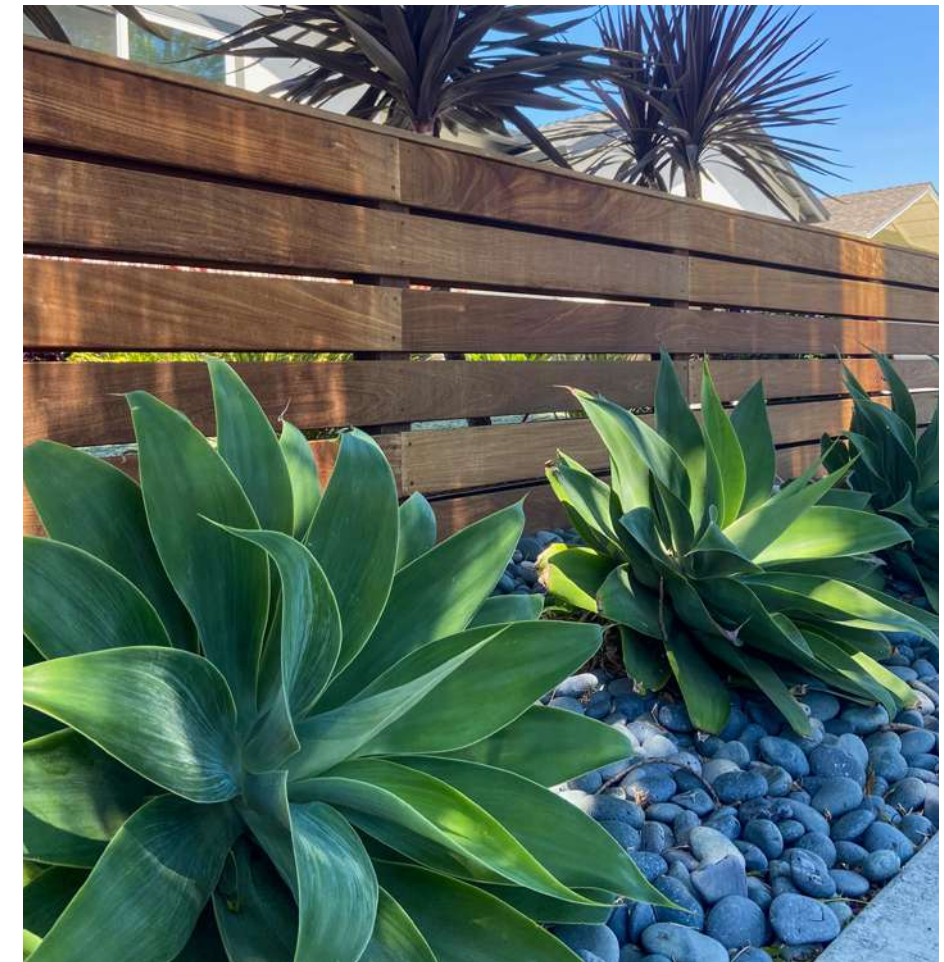
Website: www.BlueHibiscusGardens.com
Firm Location: Sunnyvale, CA

PHOTOGRAPHS BY GÜN ÜNSAL

JUDGES' FEEDBACK:

This design supplies a lovely plant palette with good layering and nice hardscape materials.

It may be small, but it is so clean and neat. Planting the hell strip gives the project a lot of depth – what a smart move. Beautifully planted – it's colorful, repetitive, and has nice texture.



silver award

EMBRACE UP-ZONING; A VICTORY FOR CREATING URBAN OASIS

Small Gardens Category
Project Location: Seattle, WA
Zone: 8

Lisa Bauer, CPLD, Chartreuse Landscape Design

Website: www.chartreuselandscape.com
Firm Location: Seattle, WA

PHOTOGRAPHS BY LISA M. BAUER



JUDGES' FEEDBACK:

The project is clean and neat. I love that all the details match so well – the screen, pergola, railing, and pots... Great job.

Beautiful layering of plant material and screening material solves the privacy issue. The design makes effective use of the vertical space. The custom screen is nicely integrated into the railing.



silver award

HAMMERSMITH GARDEN
Small Gardens Category
Project Location: London, England, UK
Zone: 9a

Jo Thompson Landscape and Garden Design

Website: www.jothompson-garden-design.co.uk
Firm Location: London and East Sussex, UK

PHOTOGRAPHS BY RACHEL WARNE

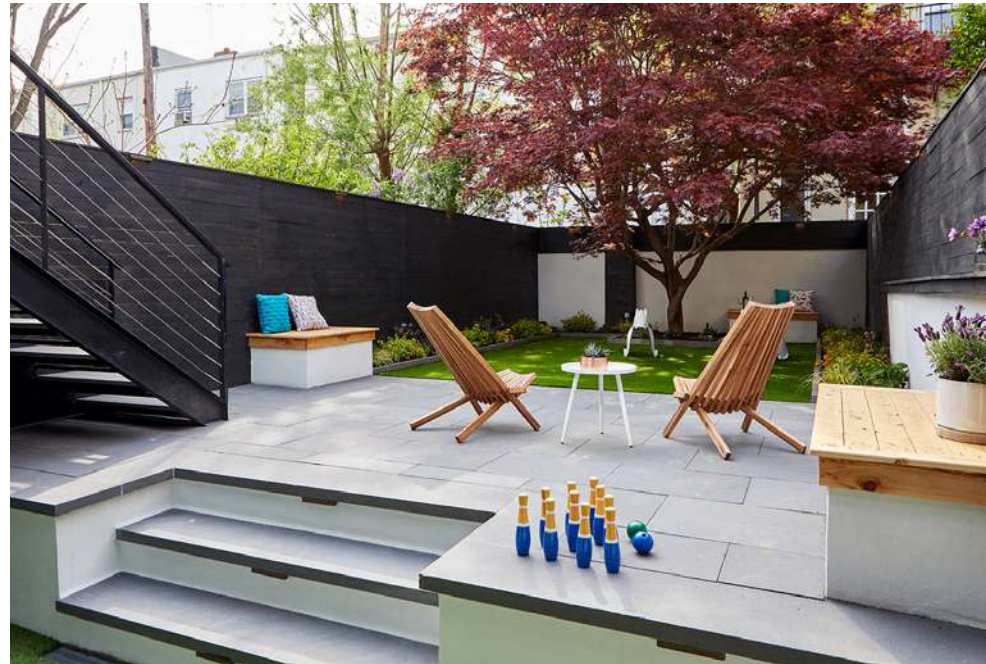


JUDGES' FEEDBACK:

A lovely English garden. It is a beautiful and dramatic change.

The excellent use of curved lines and offset spaces create an interesting garden journey through an otherwise straight space. A lush and abundant plant palette fills every nook.

silver award



NARROW BROWNSTONE GARDEN

Small Gardens Category
Project Location: Hoboken, NJ
Zone: 7b

**Emma Lam/
A Small Green Space**

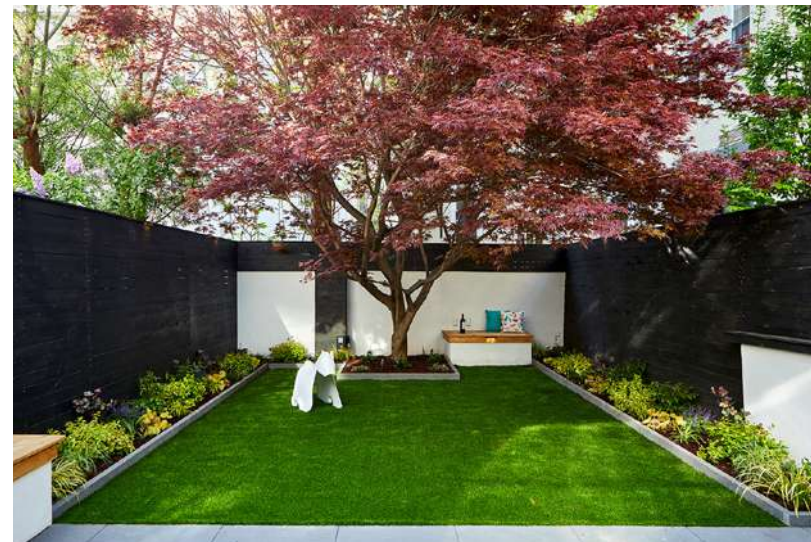
Website: www.asmallgreenspace.com
Firm Location: Jersey City, NJ

PHOTOGRAPHS BY MEGAN MALOY

JUDGES' FEEDBACK:

This is a nice, modern design. The dark walls and fence visually connect all the spaces and provide a strong sense of place. The walls and fence are an interesting contrast and background for the plant palette. They make the maple an even more beautiful focal point.

The colors and materials give it a slightly Asian feel, which works great with the Japanese maple. I love the simplicity.



silver award



SAN CLEMENTE SIMPLICITY

Small Gardens Category
Project Location: San Clemente, CA
Zone: 10a

**Living Gardens
Landscape Design**

Website: www.livinggardenslandscapedesign.com
Firm Location: Laguna Hills, CA

PHOTOGRAPHS BY BRETT HILTON PHOTOGRAPHY



JUDGES' FEEDBACK:

This is a beautiful, simple design. It is very cohesive and calming. The planting repetition and texture all add up to a great space. The execution looks flawless.

silver award



THOMPSON RESIDENCE - SMALL ENTRY GARDEN

Small Gardens Category
Project Location: Dallas, TX
Zone: 8a

Melda Cipli-Clark & Finelines Design Studio

Website: www.finelinesdesignstudio.com
Firm Location: Dallas, TX

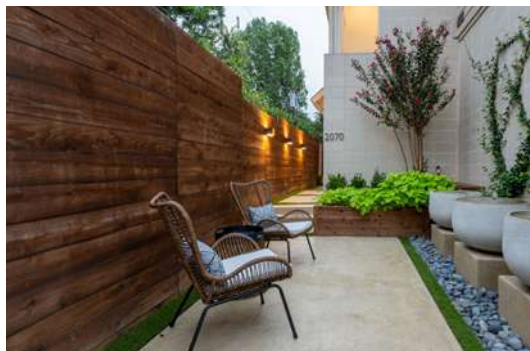
PHOTOGRAPHS BY PELIN HOSKAN



JUDGES' FEEDBACK:

This is a huge transition from the garden before. The execution is great. I love the repetition of materials and fountains. The entry is far more welcoming and the water provides peaceful background sounds.

The custom gate, stained fence, and effective lighting provide exceptional aesthetics and a warm feel to the space.



bronze award



WELCOME HOME
Small Gardens Category
Project Location: Mount Rainier, MD
Zone: 7b

Kellie Cox & Strawberry Fields LLC

Website: www.strawberrygardendesign.com
Firm Location: Silver Spring, MD

PHOTOGRAPHS BY KELLIE COX



JUDGES' FEEDBACK:

What a beautiful, contained garden space. The planting design makes good use of colors and textures spread throughout, creating a much more welcoming entry.



2023 award winners

Specialty Projects



silver award

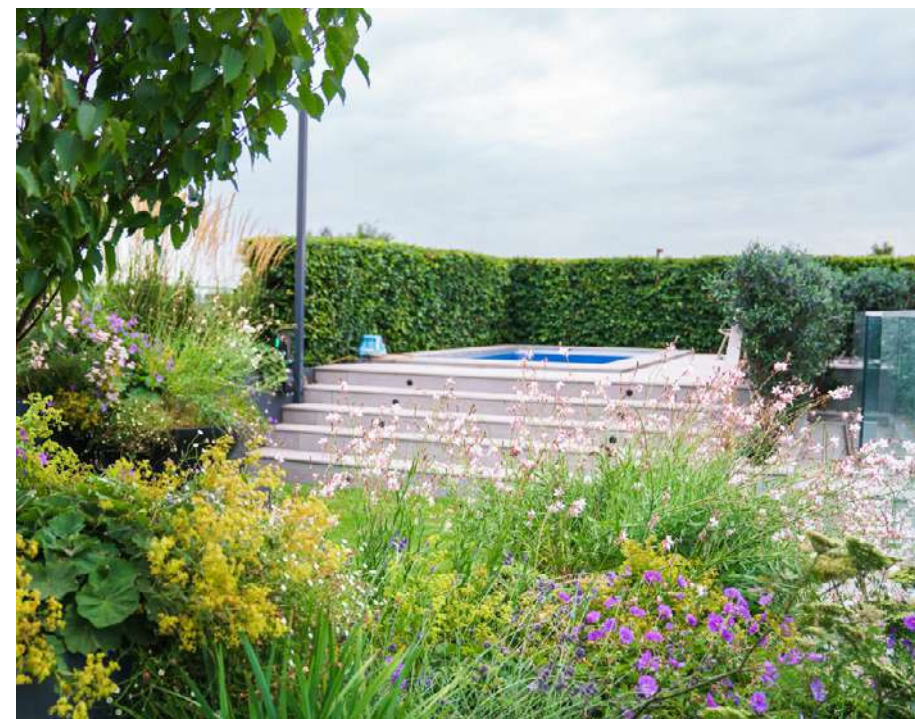
ISLINGTON ROOF GARDEN

Specialty Projects Category
Project Location: London, UK
Zone: 9a

Jo Thompson Landscape and Garden Design

Website: www.jothompson-garden-design.co.uk
Firm Location: London and East Sussex, UK

PHOTOGRAPHS BY RACHEL WARNE



JUDGES' FEEDBACK:

Adding plants makes such a transformation to a space. I love the color of the planters as it blends into the surrounding buildings and is a good foil to the greenery. The recycled planters of varying heights increase the usable planting areas dramatically.

The designer created a good division of space for the client. The overall design is simple with good circulation.

bronze award



LAWN TO LIFE: "THE NEW BEAUTIFUL IS SUSTAINABLE"

Specialty Projects Category
Project Location: Los Altos, CA
Zone: 9b

Shireen Zia

Website: www.ecogardens.design
Firm Location: Los Altos, CA

PHOTOGRAPHS BY SHIREEN ZIA



JUDGES' FEEDBACK:

This is a very dramatic front yard redo that successfully incorporates the ReScape principles from the watershed foundation. The designer crafted a lovely overall design with great solutions for privacy and the environment. The blue pots are a great accent and add color and interest.



staff

Executive Director

Denise R. Calabrese, CAE
info@apld.org

Communications Director

Michelle Keyser
communications@apld.org

Communications Manager

Courtney Kuntz
comm@apld.org

contact us

Association of Professional Landscape Designers

2207 Forest Hills Drive
Harrisburg, PA 17112
Phone: 717-238-9780
Fax: 717-238-9985
Website: www.apld.org
Office Hours: Monday through Friday
8:30 a.m. - 5 p.m. Eastern Time



APLD 2023 Board of Directors

Executive Committee

President

Richard Rosiello
Rosiello Designs &
Meadowbrook Gardens
159 Grove Street
New Milford, CT 06776
(860) 488-6507
rosiellodesigns@gmail.com

Treasurer

Lisa Nunamaker, PLA
Iowa State University,
Dept of Horticulture
129 Horticulture Hall
Ames, IA 50011
(515) 294-6375
lisa@papergardenworkshop.com

President-Elect

Bill Ripley, CPLD, FAPLD
Stride Studios
8525 Miami Road
Cincinnati, OH 45243
(513) 984-4882
bill@stridestudios.com

Immediate Past President

Eric Gilbey, PLA
Vectorworks, Inc.
7150 Riverwood Drive
Columbia, MD 21046
(443) 542-0658
egilbey@vectorworks.net

Directors

Francesca Corra, CPLD

Dirt Diva Designs
4030 Cartwright Avenue
Studio City, CA 91604
(818) 370-3200
fcorra@aol.com

Wickie Rowland, CPLD

Forget-Me-Not Design
PO Box 635
New Castle, NH 03854
(603) 828-1461
ForgetMeNotDotDesign@gmail.com

Linda Middleton, CPLD, FAPLD

Terralinda Design
1839 Ygnacio Valley Rd.,
#150
Walnut Creek, CA 94598
(925) 448-2441
linda@terralindadesign.com

Katie Weber, CPLD

Katie Weber
Landscape Design
5637 45th Avenue SW
Seattle, WA 98136
(206) 391-8894
katie@katieweberlandscapedesign.com



Association of
Professional
Landscape
Designers